

MAIN LOG - SANDSTONE MATRIX

ECLIPS 6.0p Feb 21, 2008
Updates: 1

Mon Oct 5 20:17:33 2009

Pcrplt /main/62

Cplot

Pdf_Cpp /main/16

Fileview 5.42

PARAMETER AND FILTER SUMMARY REPORT

File: /data/pass/vul_2/k970a05.prm
LOGGING MODE: DEPTH DIRECTION: UP
TOP DEPTH: 1992.052 m BOTTOM DEPTH: 3556.635 m

SYMMETRIC FILTER

MEASUREMENT TYPE	PARAMETER	VALUE	UNITS	INTERVAL (m)	
CHT	FILTER ()	medium (1)		TOP	BOTTOM
GR MED RES	FILTER ()	medium (1)		''	''
CALIPER	FILTER ()	medium (1)		''	''
TENSION	FILTER ()	medium (1)		''	''
CN MED RES	FILTER ()	medium (1)		''	''
ZDL MED RES	FILTER (hrd1*)	medium		''	''
	FILTER (hrd1s*)	medium		''	''
	FILTER (hrd2*)	medium		''	''
	FILTER (hrd2s*)	medium		''	''
	FILTER (soft*)	medium		''	''

BOREHOLE & CEMENT

MEASUREMENT TYPE	PARAMETER	VALUE	UNITS	INTERVAL (m)	
CASING - BOREHOLE & CEMENT VOLUME	CASING O.D.	177.800	mm	TOP	BOTTOM
	CASING THICKNESS	0.000	mm	''	''
X-Y COMBINED CALIPER PROCESSING-FOCUS	FOCUS Caliper - FOCUS	Average		''	''
BIT SIZE	BIT SIZE	215.000	mm	''	''
BOREHOLE CORR DIAMETER SOURCE	CALIPER/FIXED DIA. (cnbh*)	USE CALIPER		''	''
BOREHOLE CORR DIAMETER	FIXED DIAMETER (cnbh*)	215.000	mm	''	''

ACCELERATION PROCESSING

MEASUREMENT TYPE	PARAMETER	VALUE	UNITS	INTERVAL (m)	
ACCEL CORR SWITCH	ACCEL DEPTH CORR	CORRECTION ON		TOP	BOTTOM

CN PROCESSING

MEASUREMENT TYPE	PARAMETER	VALUE	UNITS	INTERVAL (m)	
CN BOREHOLE CORRECTION	SALINITY	0	ppm	TOP	BOTTOM
	BOREHOLE CORRECTION	ON		''	''
CN CASING & CEMENT CORRECTION	CORRECTION	OFF		''	''
	BIT SIZE BEHIND CSNG	244.500	mm	''	''

ZDL PROCESSING

MEASUREMENT TYPE	PARAMETER	VALUE	UNITS	INTERVAL (m)	
DENSITY POROSITY	RHOfluid	1.000	g/cm3	TOP	BOTTOM
	RHOmatrix (sand)	2.650	g/cm3	''	''

CURVE DESCRIPTION REPORT

CURVE NAME	CURVE ALIAS	CREATION DATE	CURVE DESCRIPTION	
F1:BIT	BIT	Oct 5 15:23:56 2009	BIT SIZE	
F1:CALX	CALX	Oct 5 15:23:56 2009	CALIPER FROM X AXIS OF X-Y CALIPER(S)	
F1:CALY	CALY	Oct 5 15:23:56 2009	CALIPER FROM Y AXIS OF X-Y CALIPER(S)	
F1:CHT	CHT	Oct 5 15:23:56 2009	CABLE HEAD TENSION	
F1:CNCS	CNCS	Oct 5 15:23:56 2009	BH SIZE CORR. SANDSTONE COMPENSATED NEUTRON POROSITY	
F1:GP	GP	Oct 5 15:23:56 2009	GAMMA RAY	

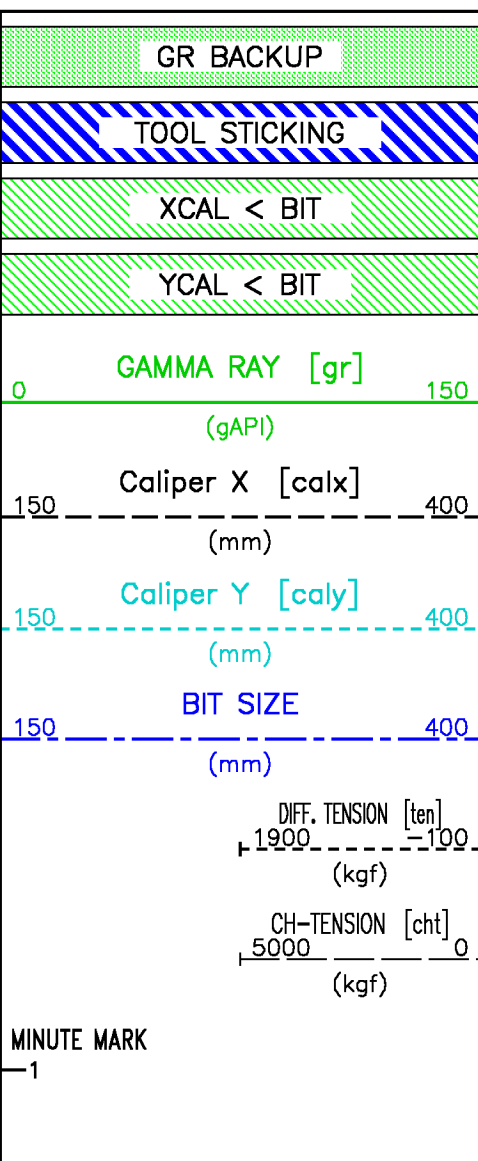
GR	GR	Oct 5 15:23:56 2009	GAMMA RAY
F1:MMRK	MMRK	Oct 5 15:23:56 2009	MINUTE MARK
F1:PE	PE	Oct 5 15:23:56 2009	PHOTO ELECTRIC CROSS-SECTION
F1:PZSS	PZSS	Oct 5 15:23:56 2009	POROSITY FOR SANDSTONE MATRIX
F1:TEN	TEN	Oct 5 15:23:56 2009	DIFFERENTIAL TENSION
F1:ZCOR	ZCOR	Oct 5 15:23:56 2009	DENSITY CORRECTION

CURVE MEASURE POINT OFFSET

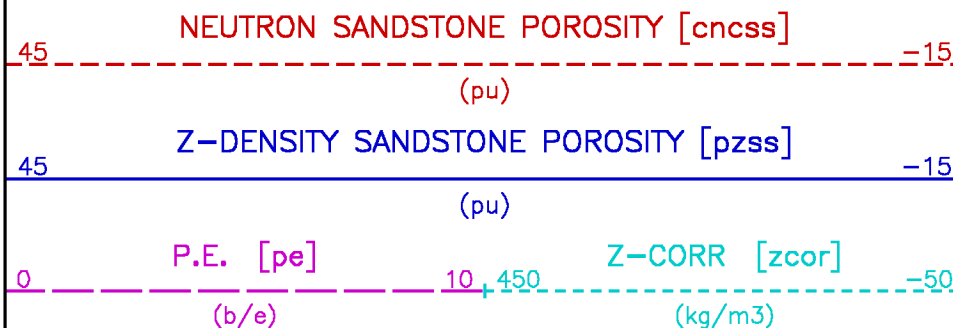
CURVE	OFFSET (m)	CURVE	OFFSET (m)	CURVE	OFFSET (m)	CURVE	OFFSET (m)
BIT	0.00	CHT	0.00	PE	5.49	ZCOR	5.49
CALX	5.49	CNCSS	8.34	PZSS	5.49		
CALY	14.33	GR	10.67	TEN	0.00		

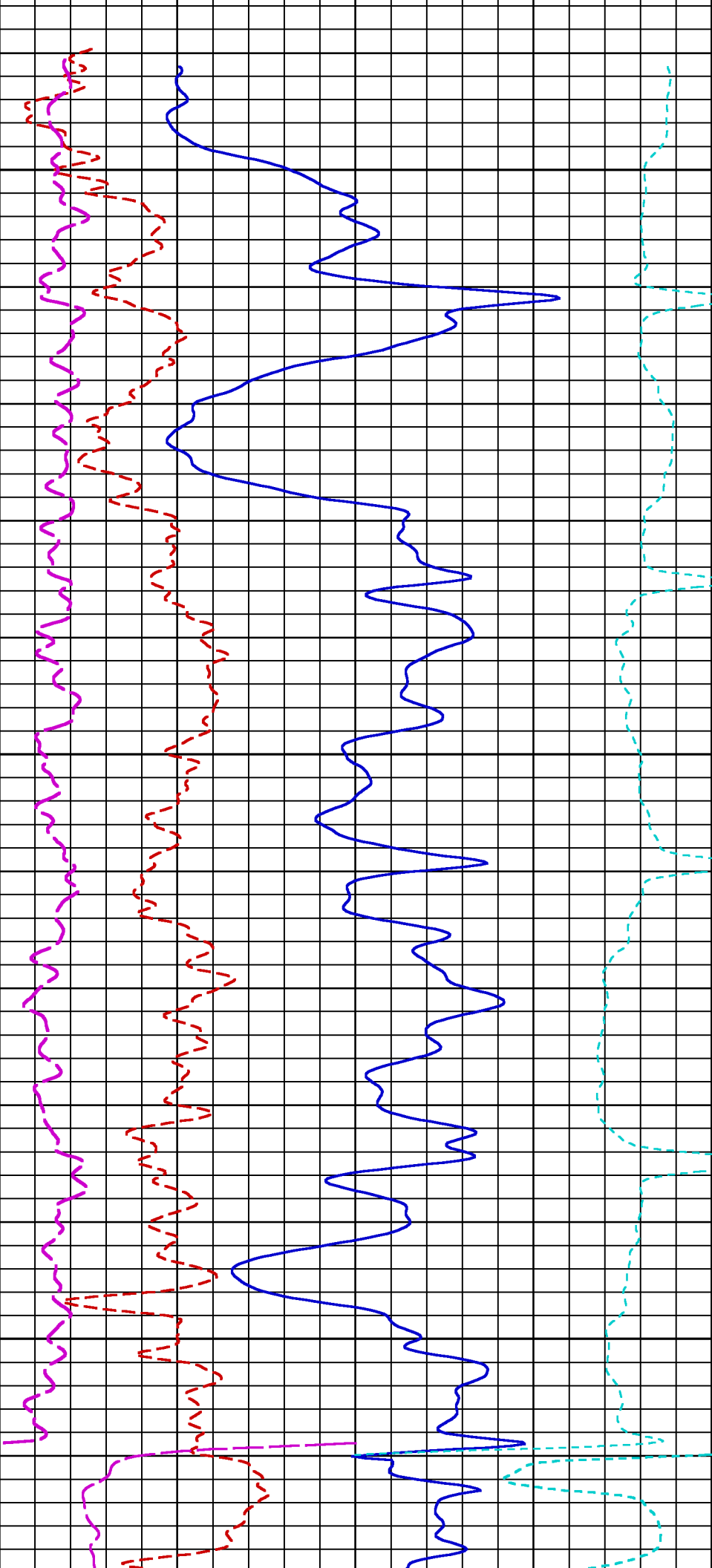
Presentation : cpu1:/dat1a/pass/vul_2/rush_fzdl_main_ss.pdf [1:240 Scale]
Plot Interval : 1985.85 - 3559.84 Meters

Data File 1 : F1 : cpu1:/dat1a/pass/vul_2/r2i2_main.xtf
Created On : Oct 5 15:23:56 2009
Company : VULCAN MINERALS INC.
Well : VULCAN INVESTCAN ROBINSONS #1
Field : UNDEFINED
File Interval : 1982.95 - 3563.04 Meters
Oct : k970a



METERS

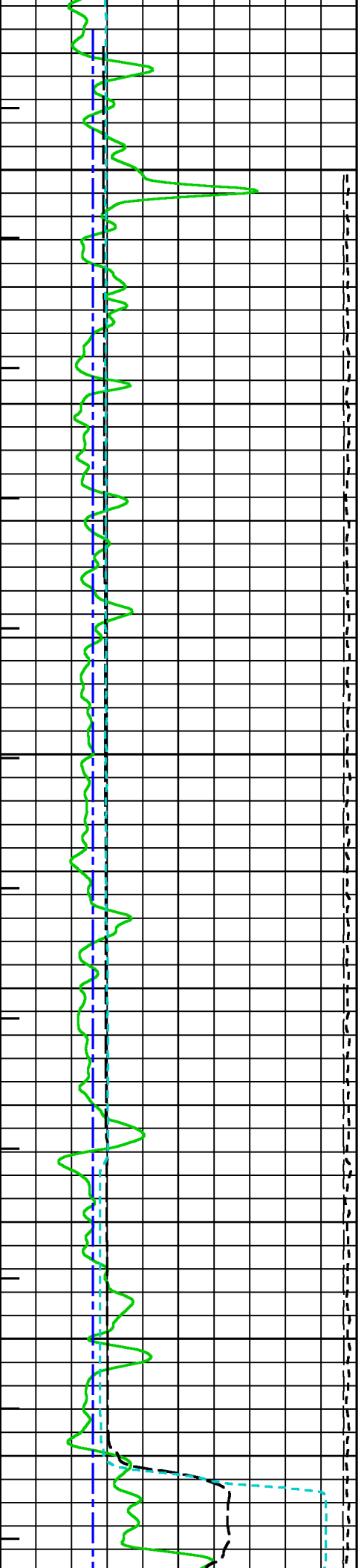


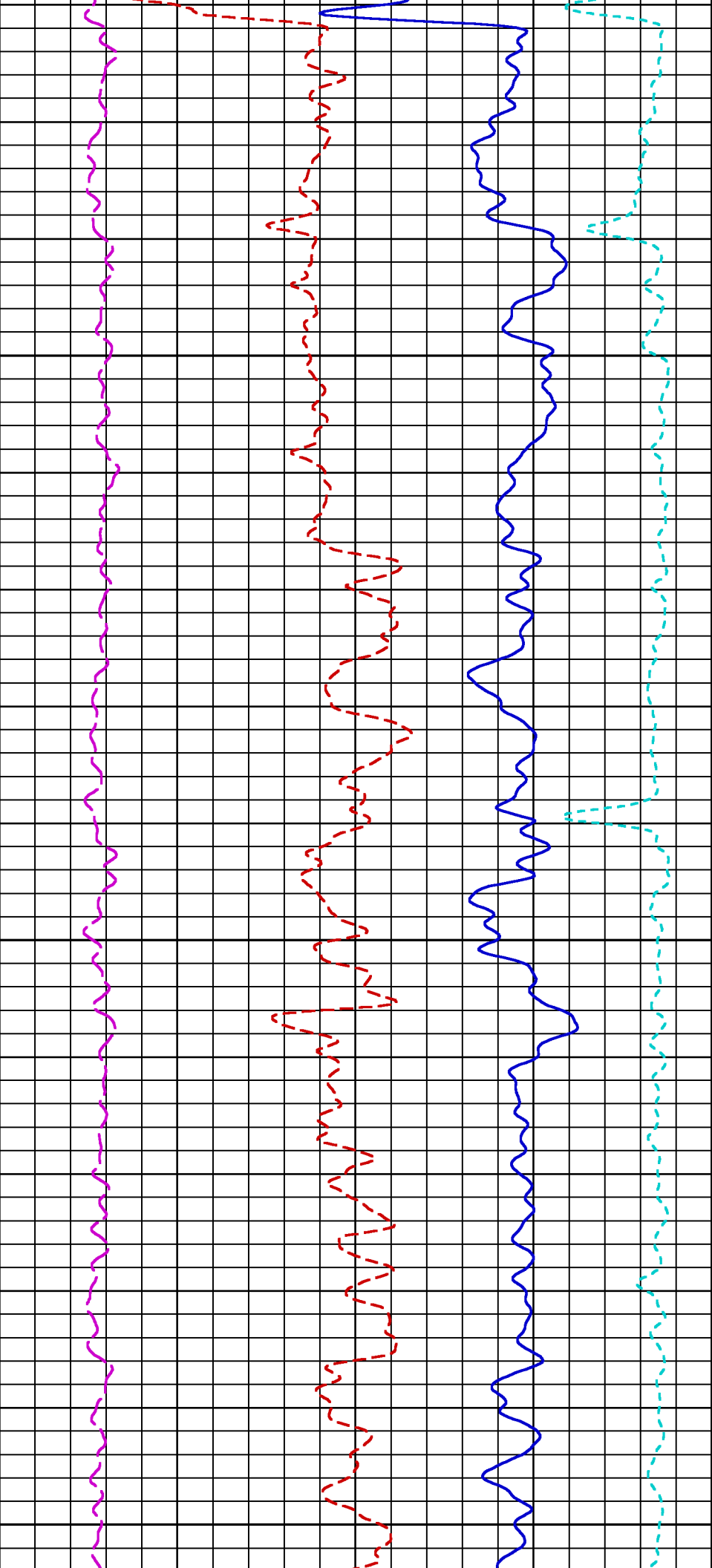


2000

2025

2050

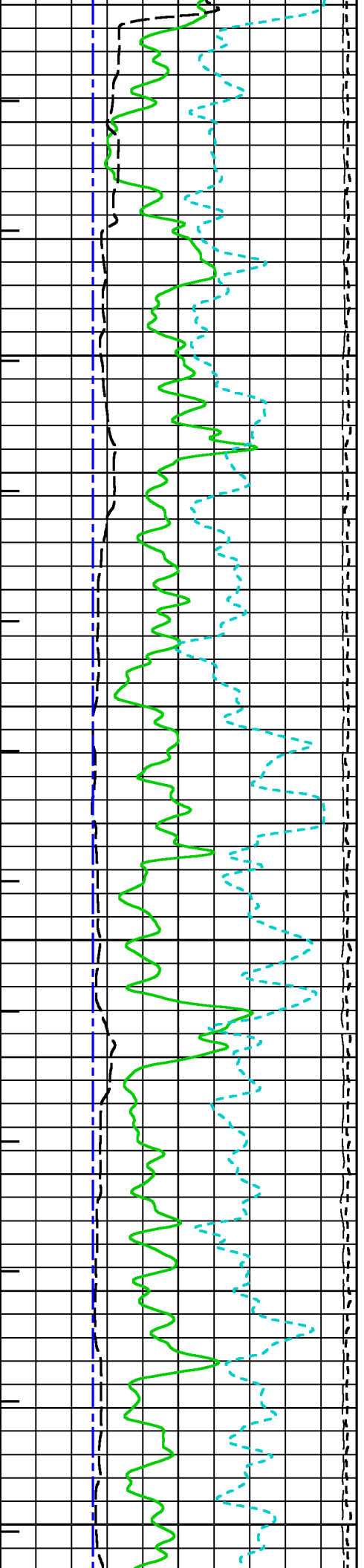


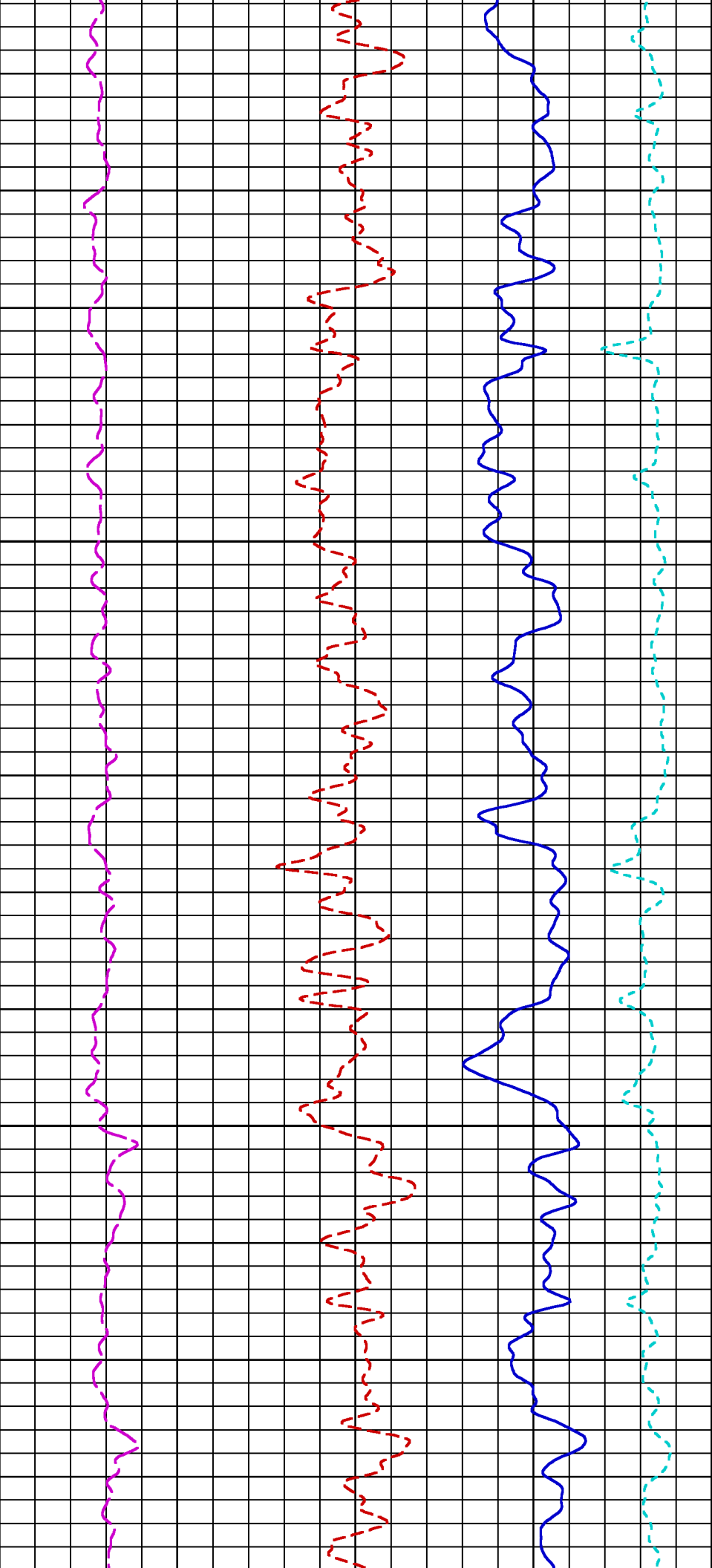


2075

2100

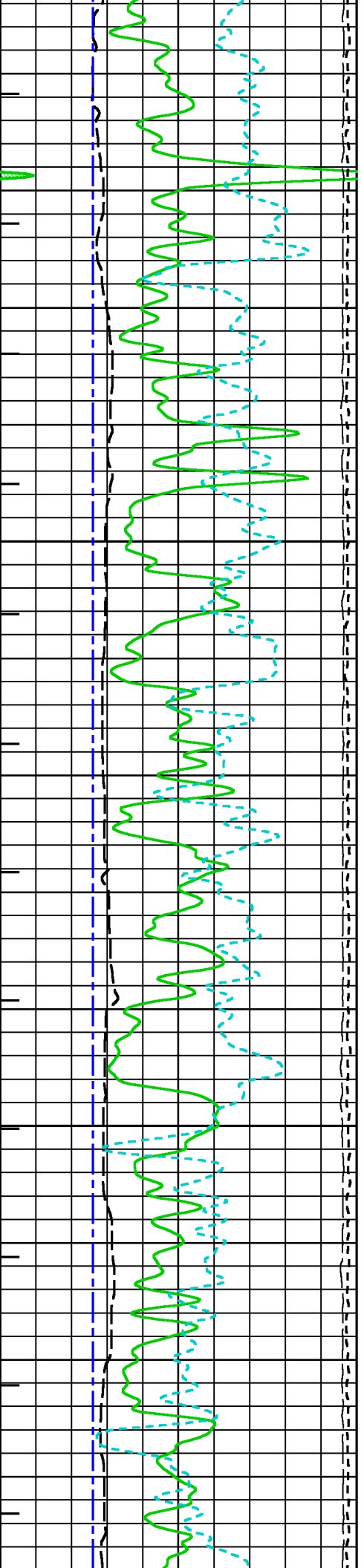
2125

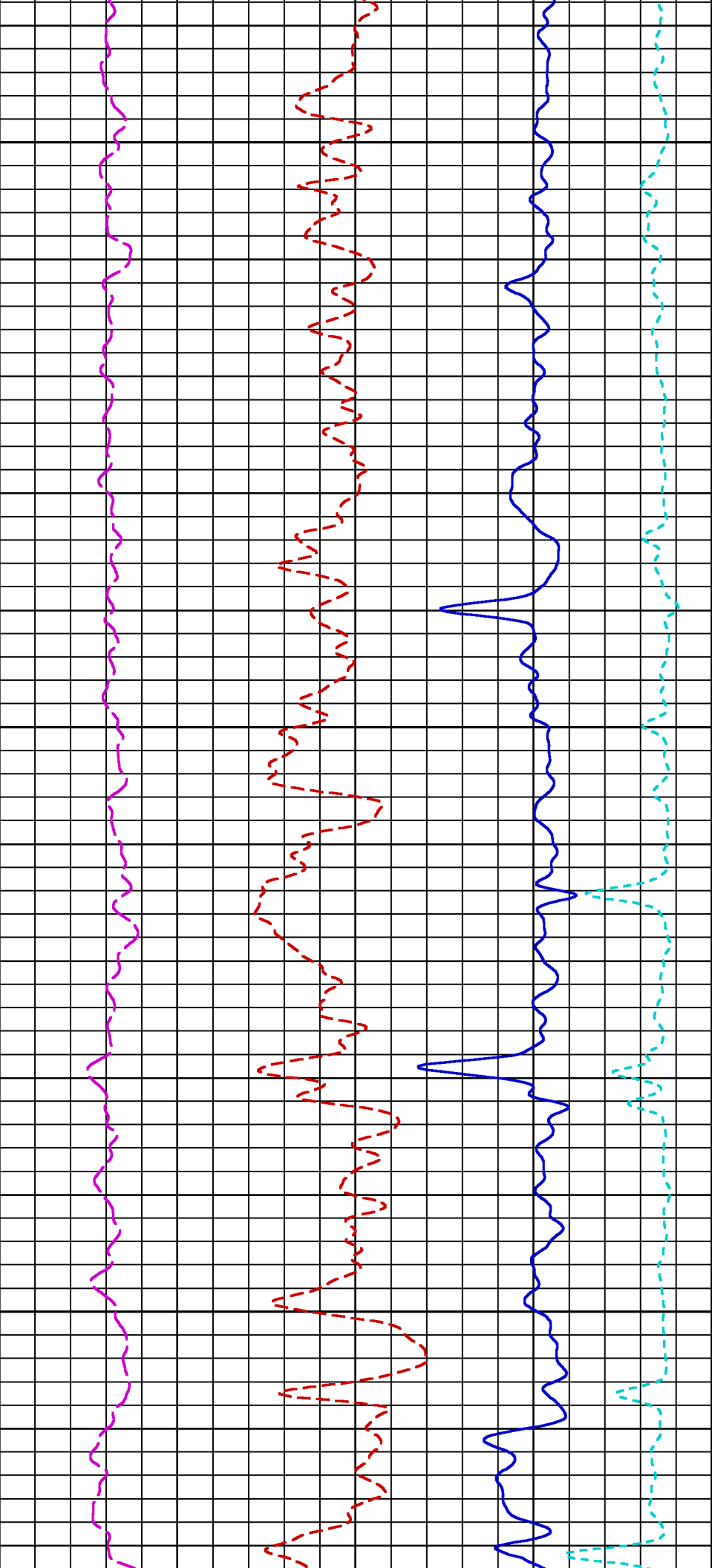




2150

2175

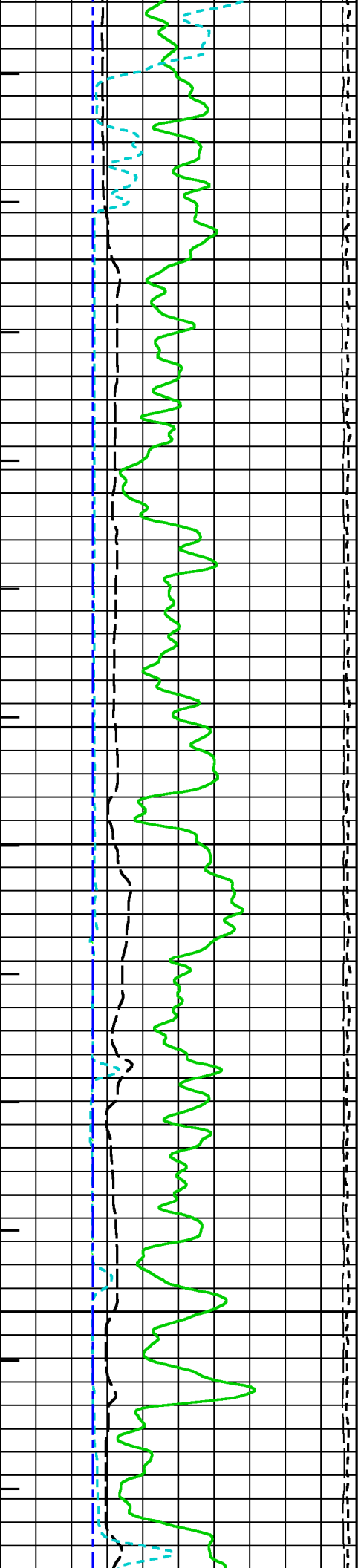


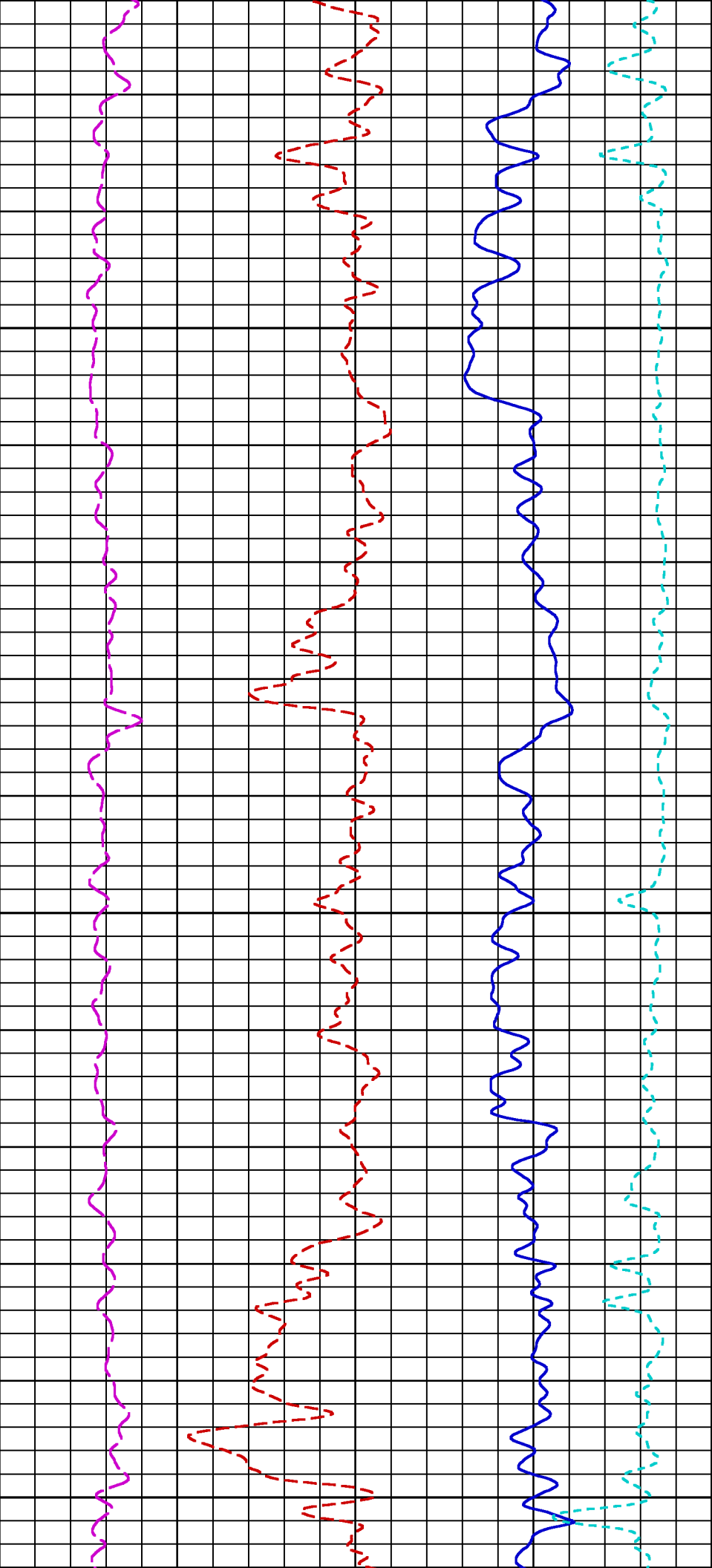


2200

2225

2250

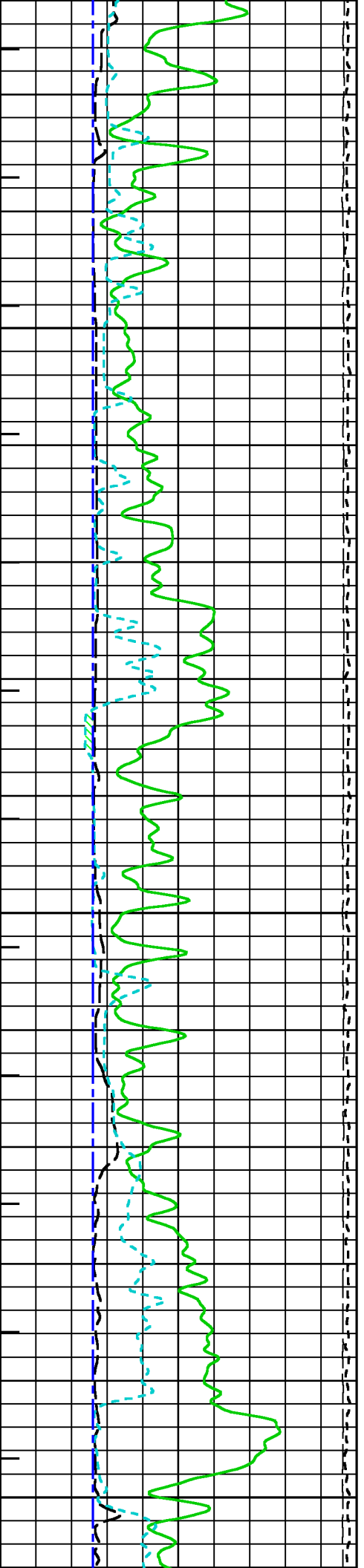


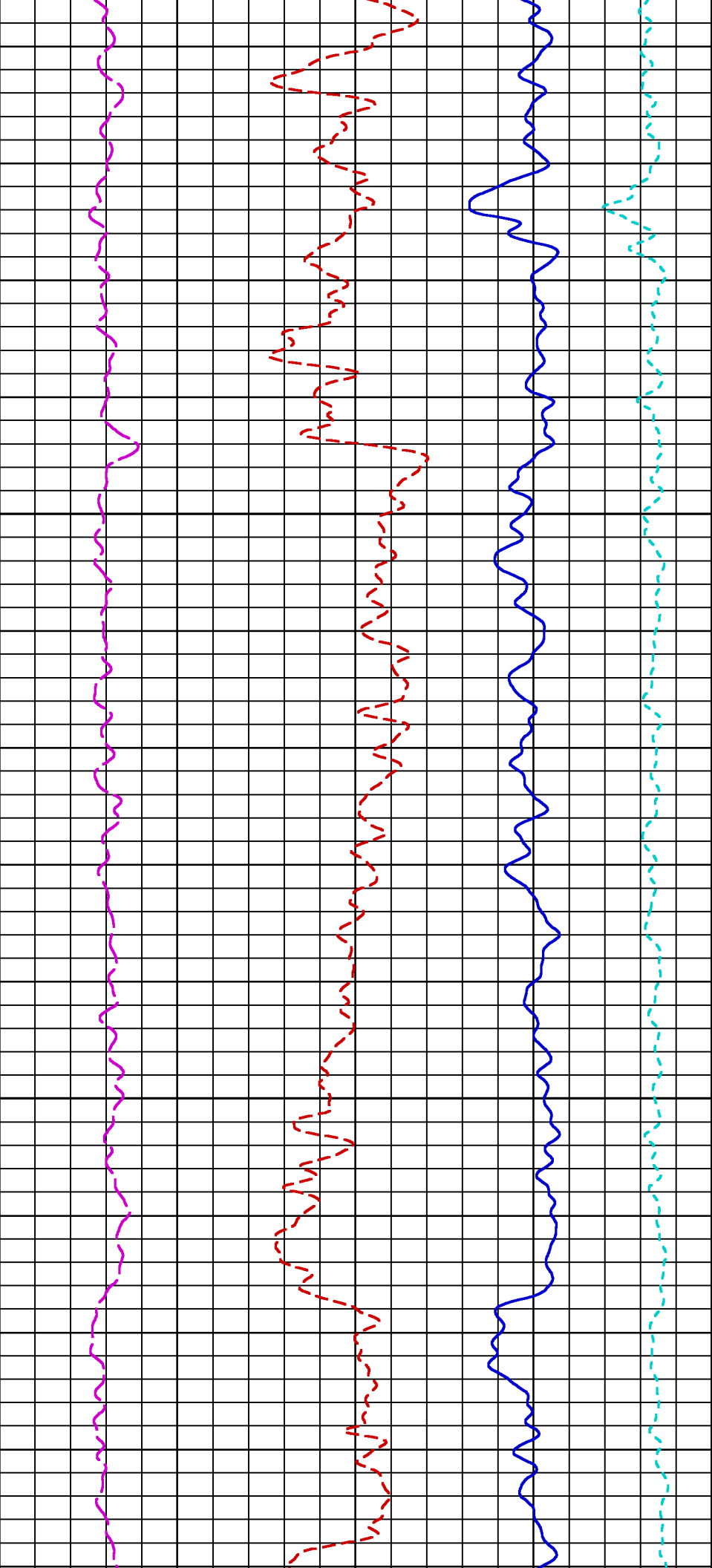


2275

2300

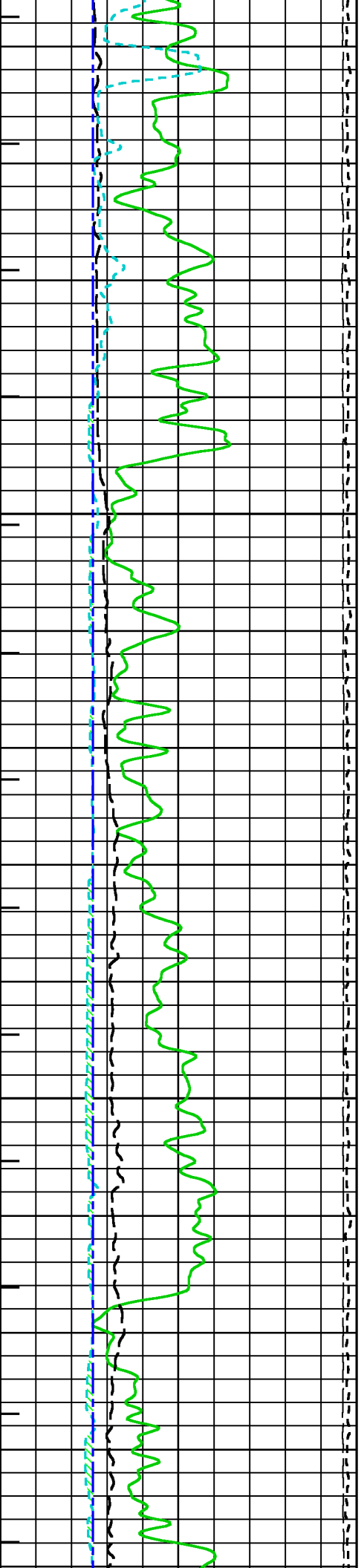
2325

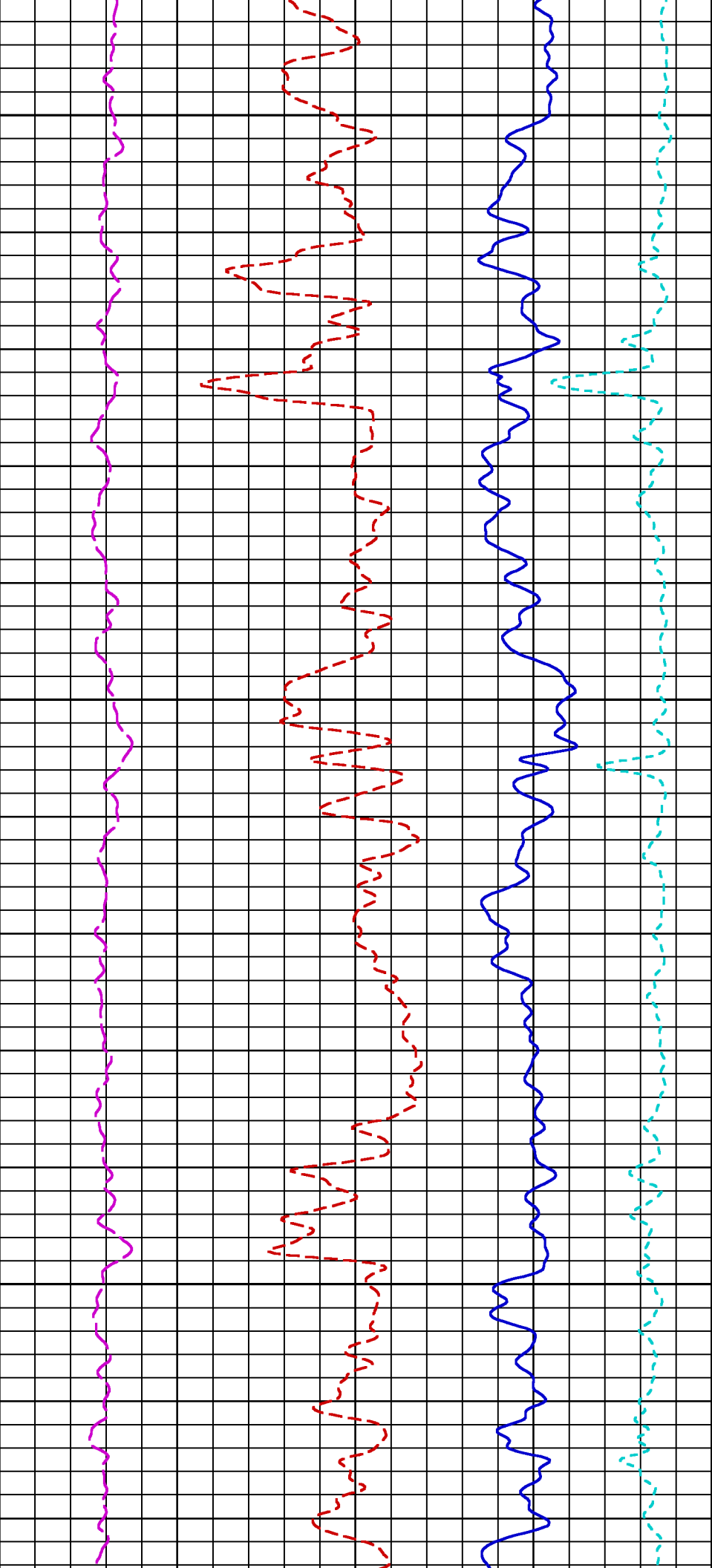




2350

2375

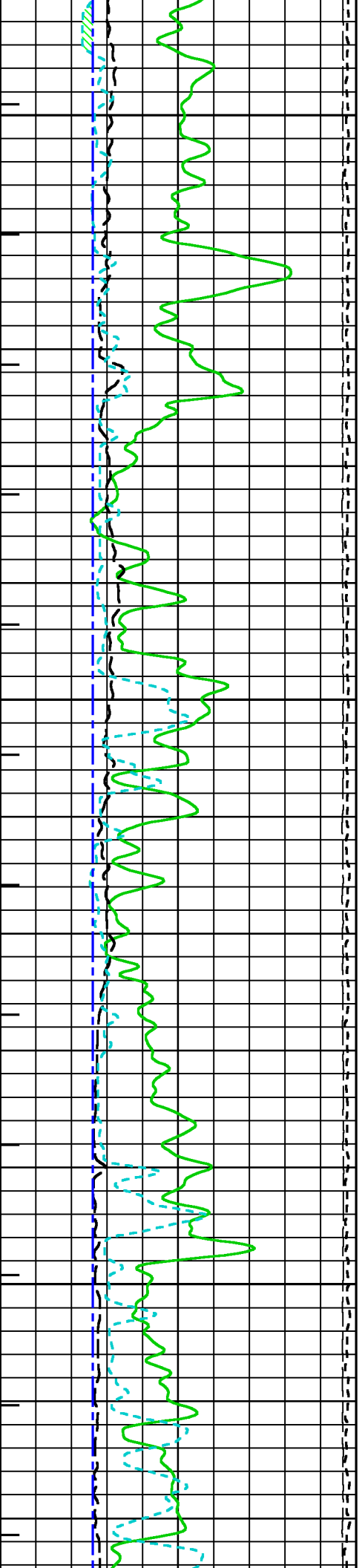


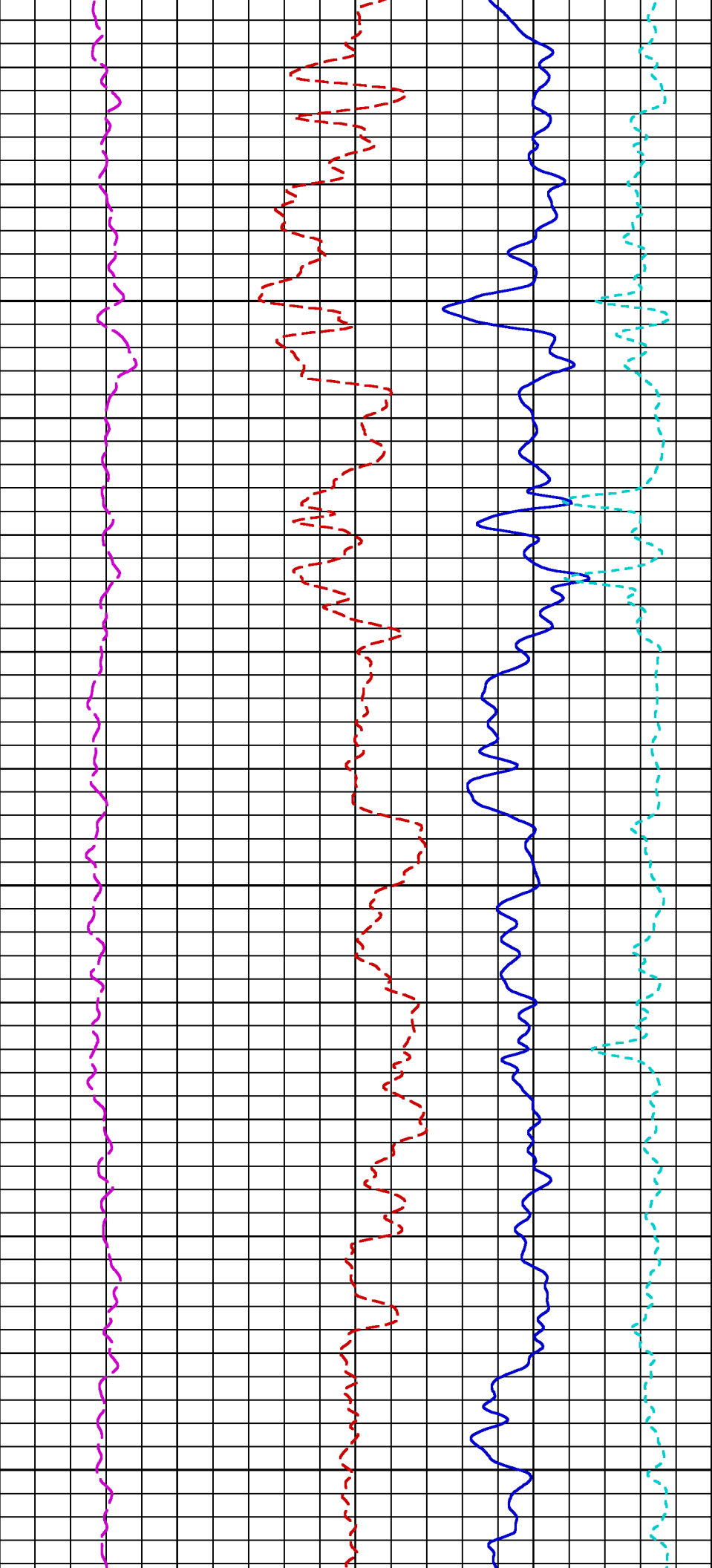


2400

2425

2450

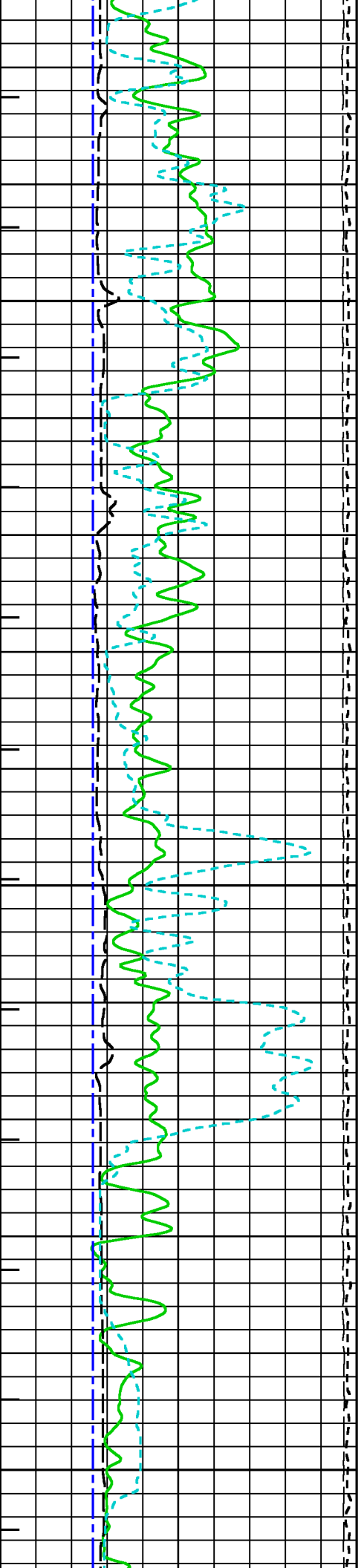


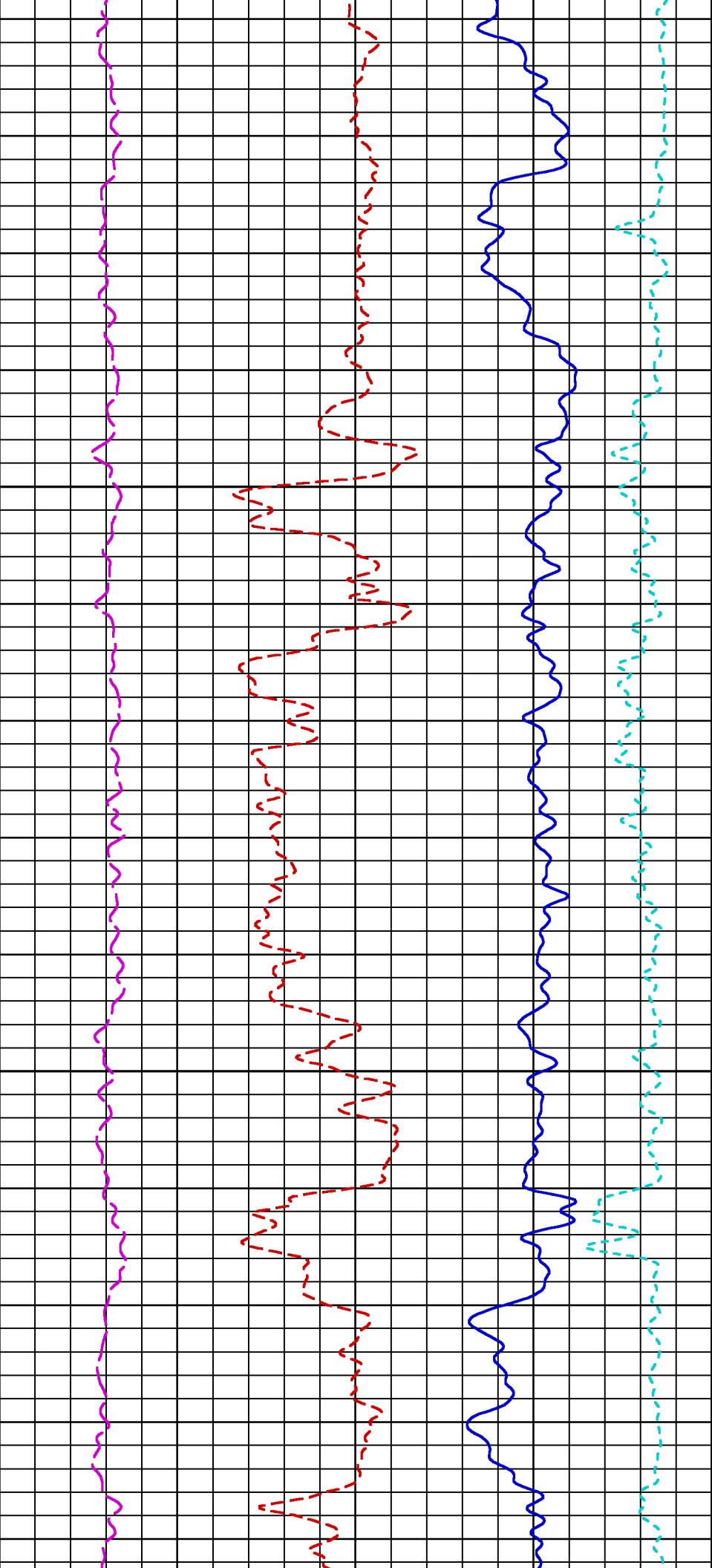


2475

2500

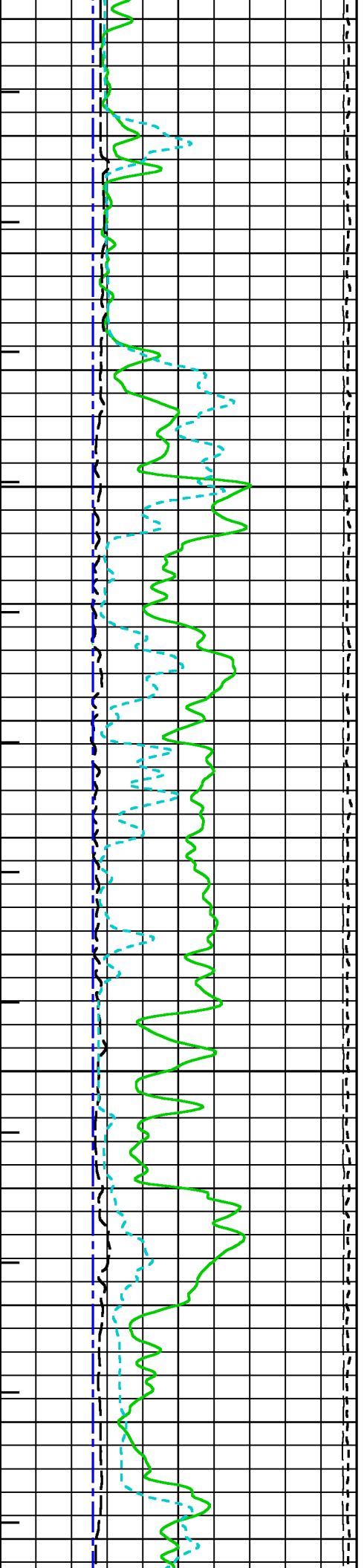
2525

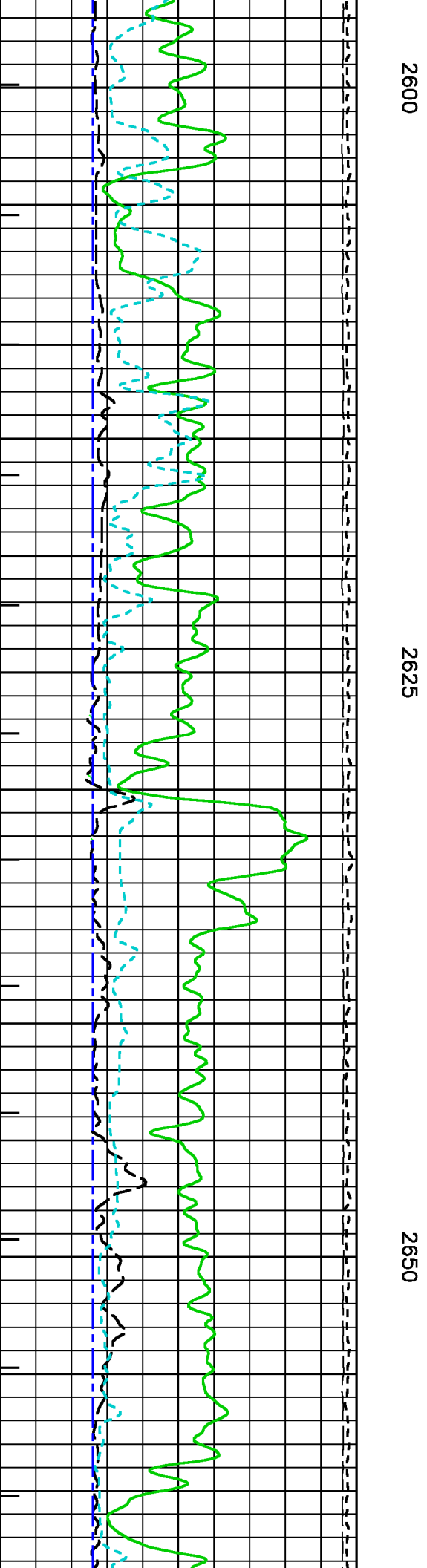
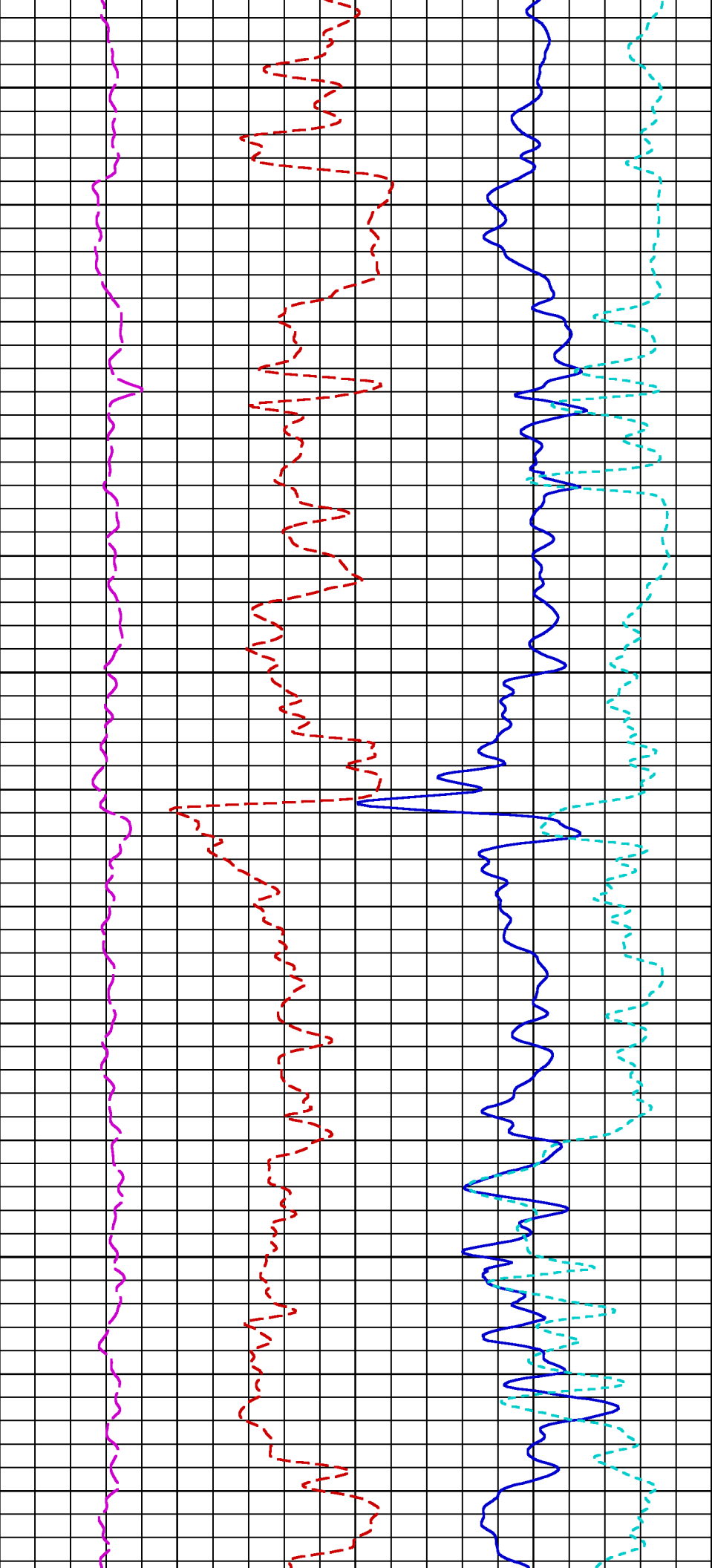


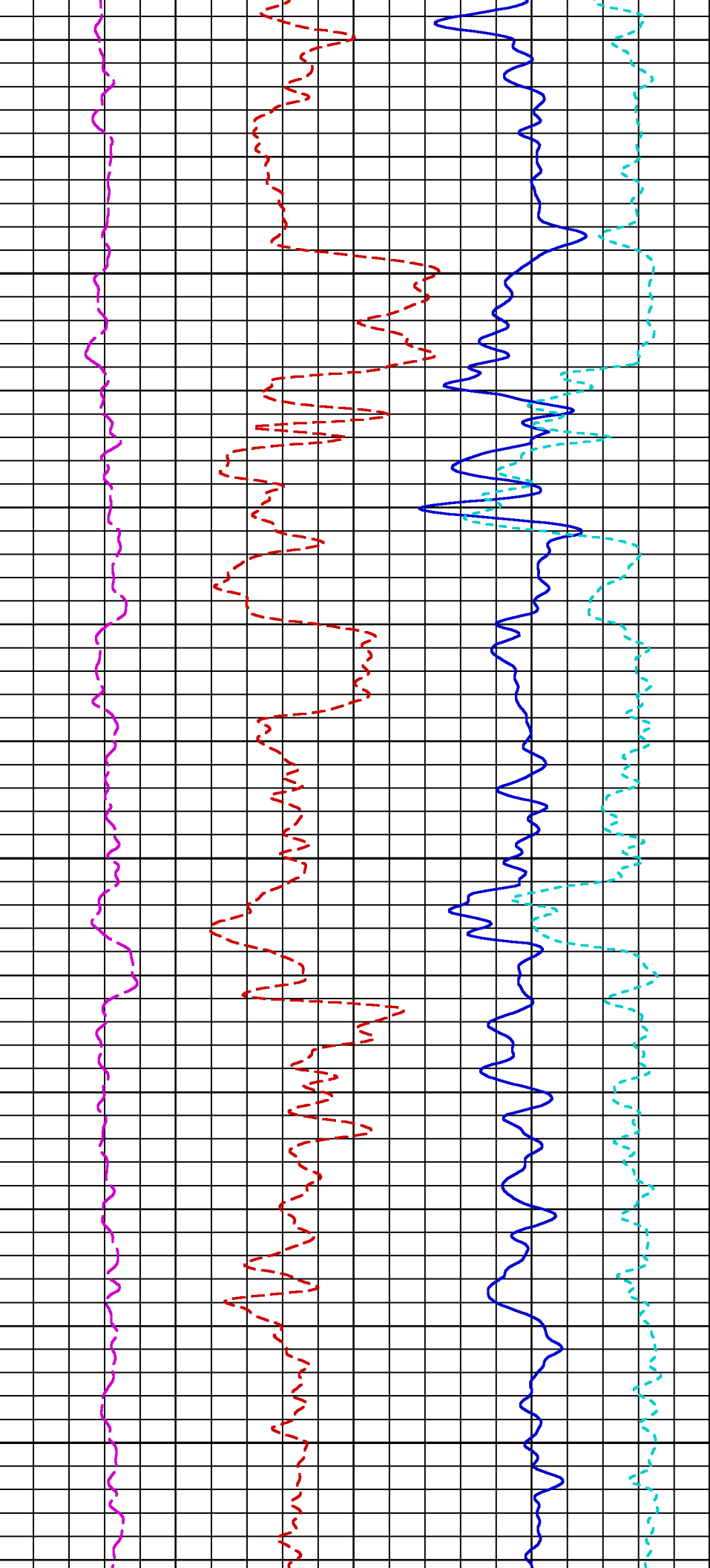


2550

2575



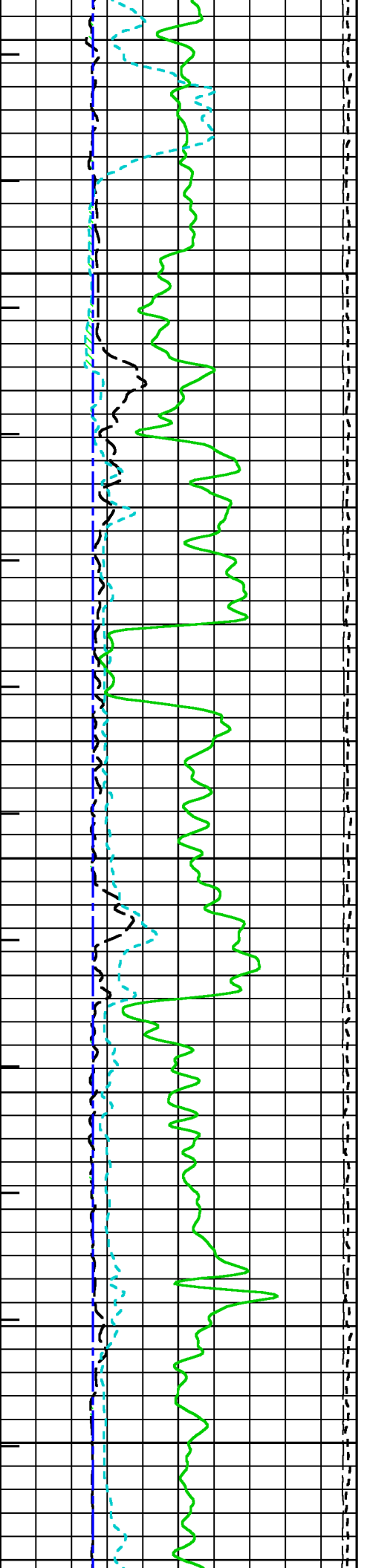


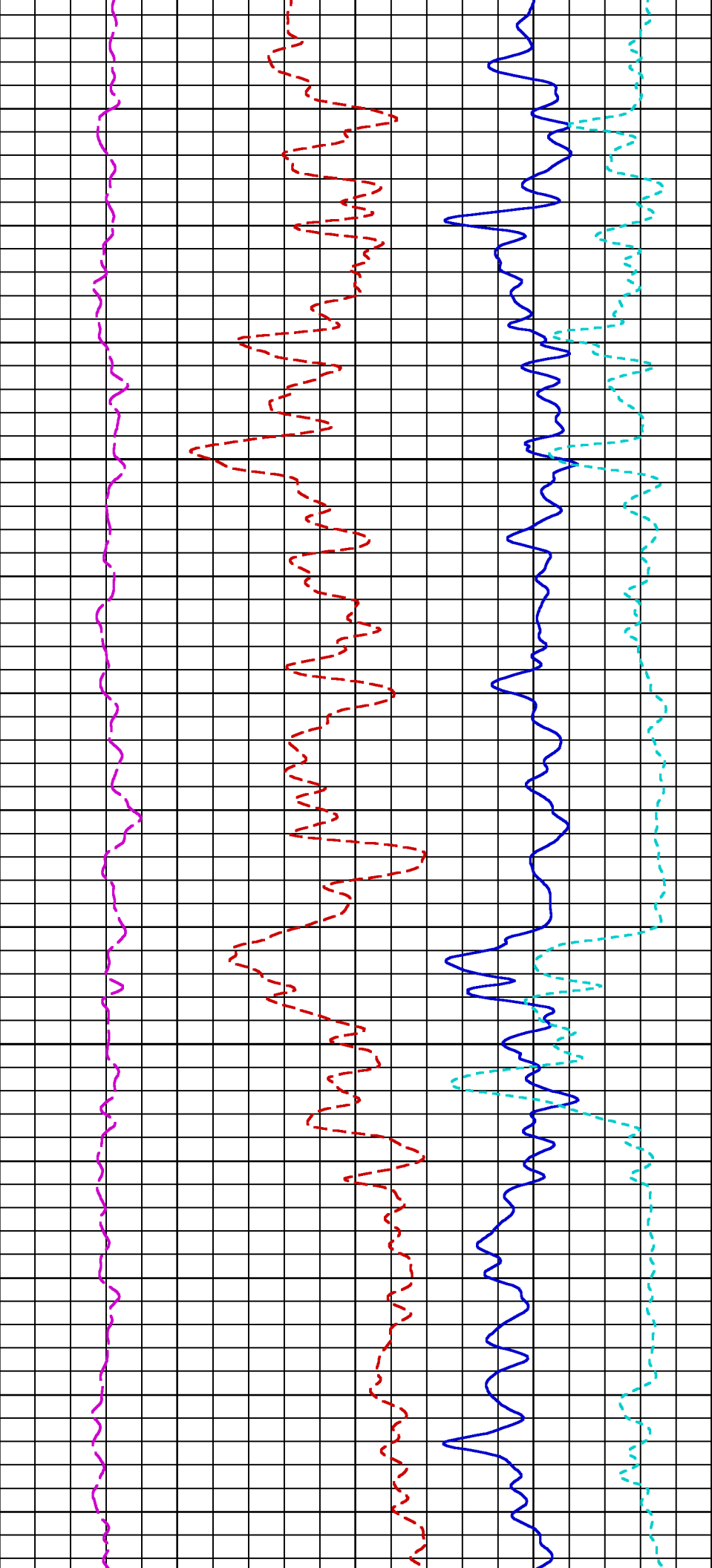


2675

2700

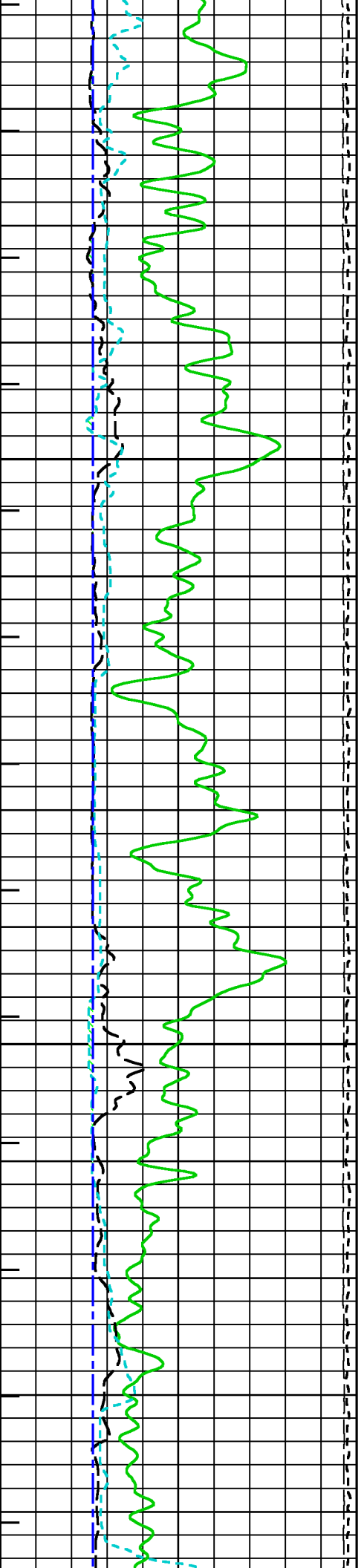
2725

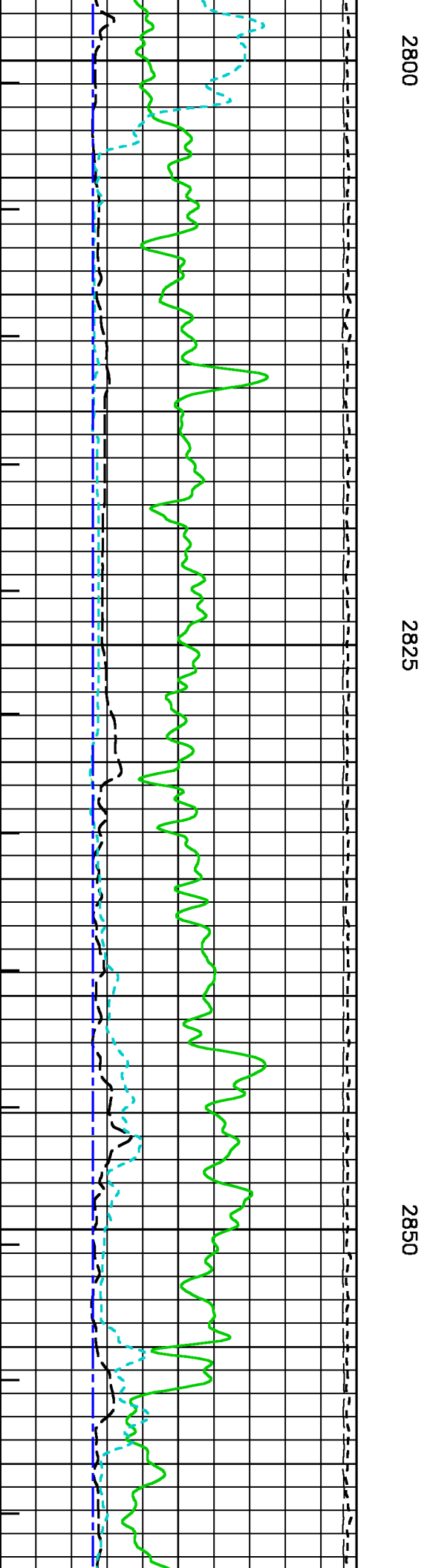
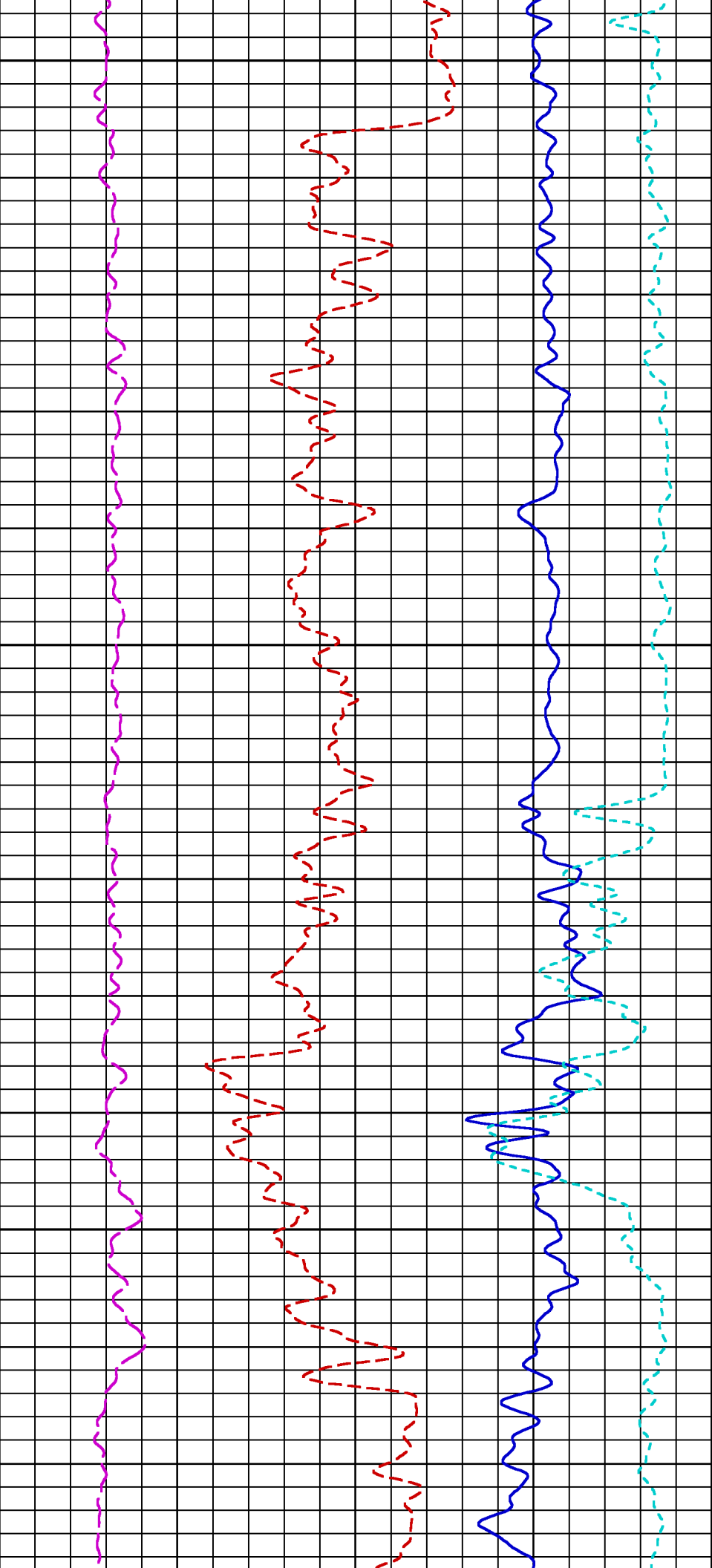


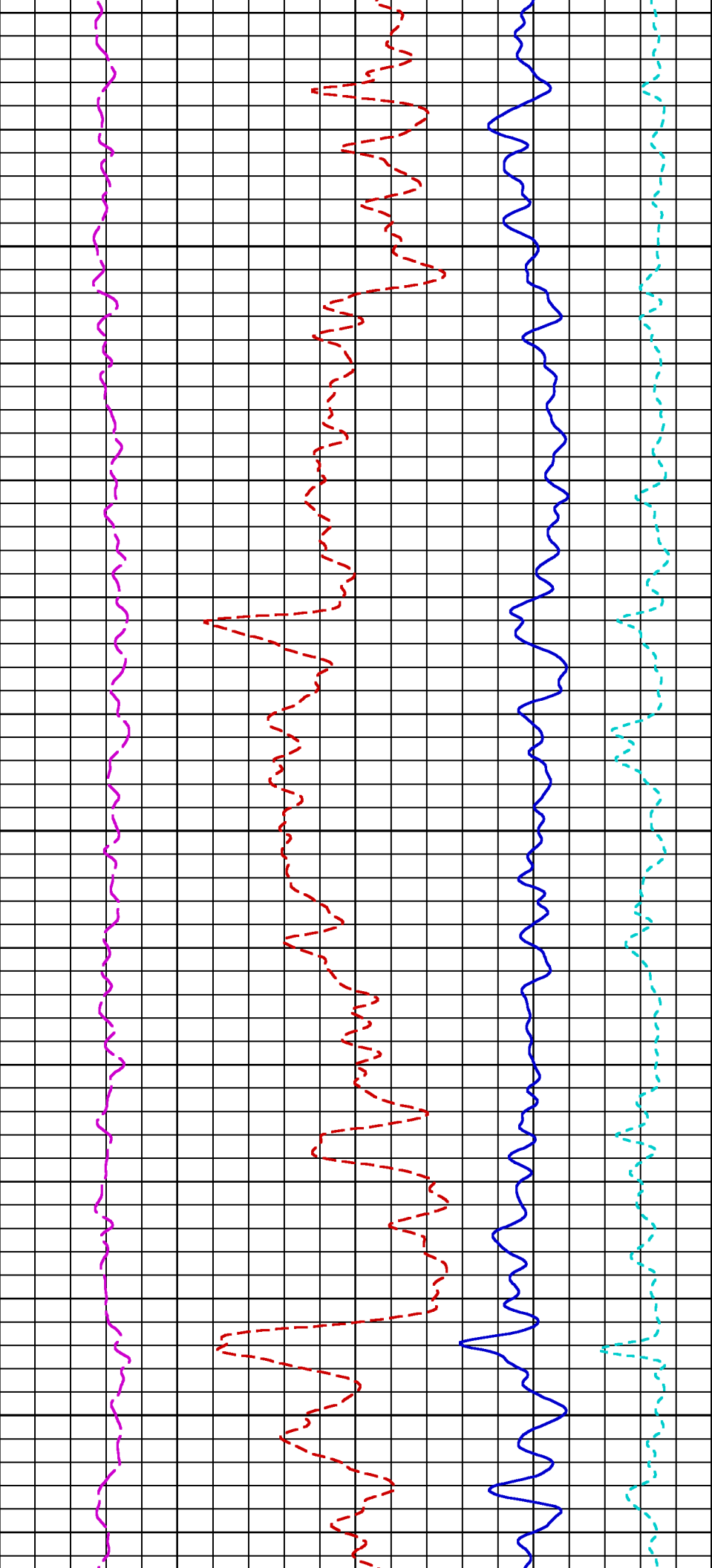


2750

2775



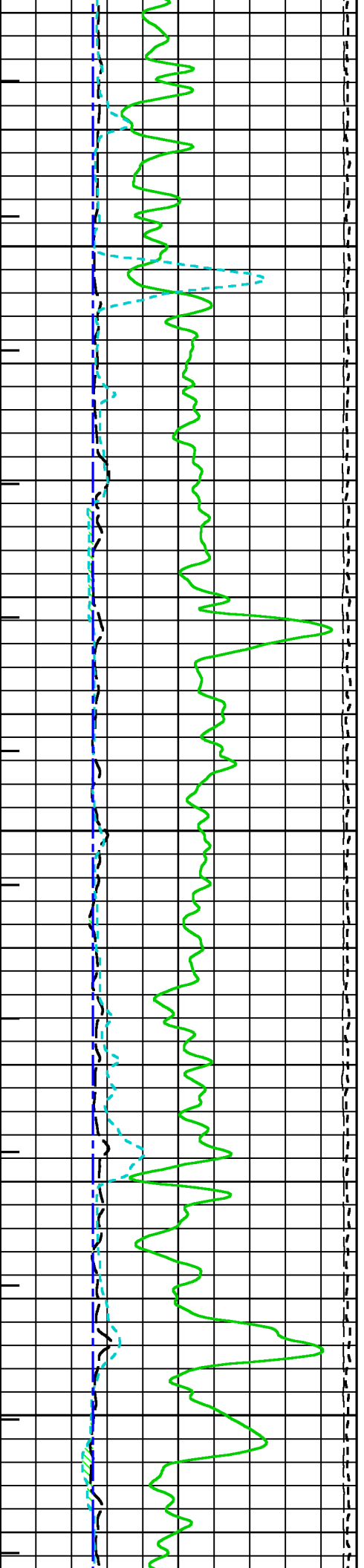


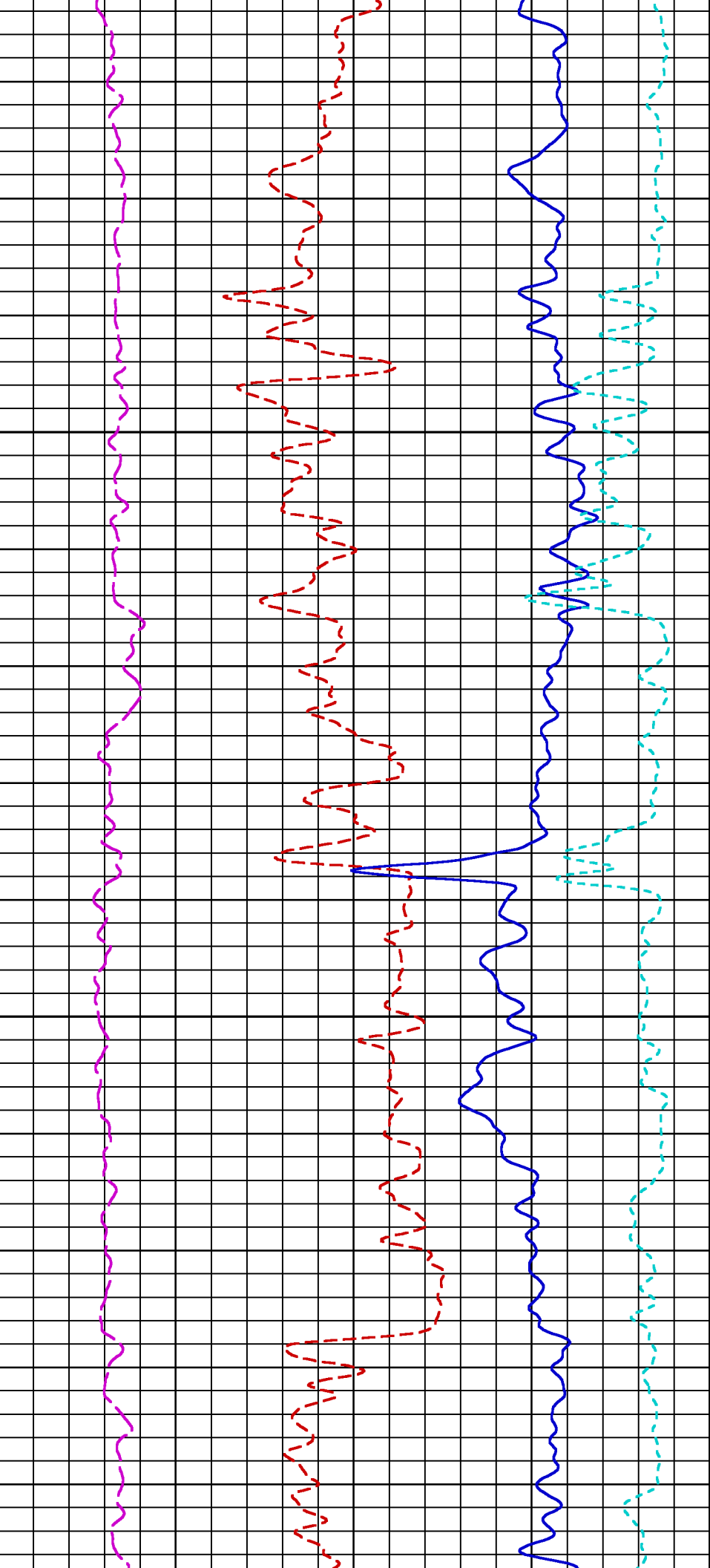


2875

2900

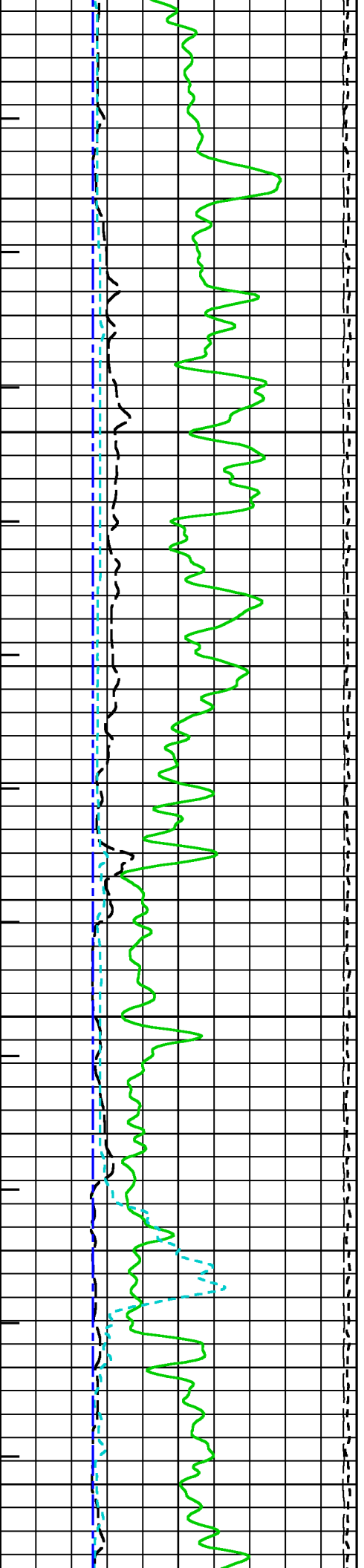
2925

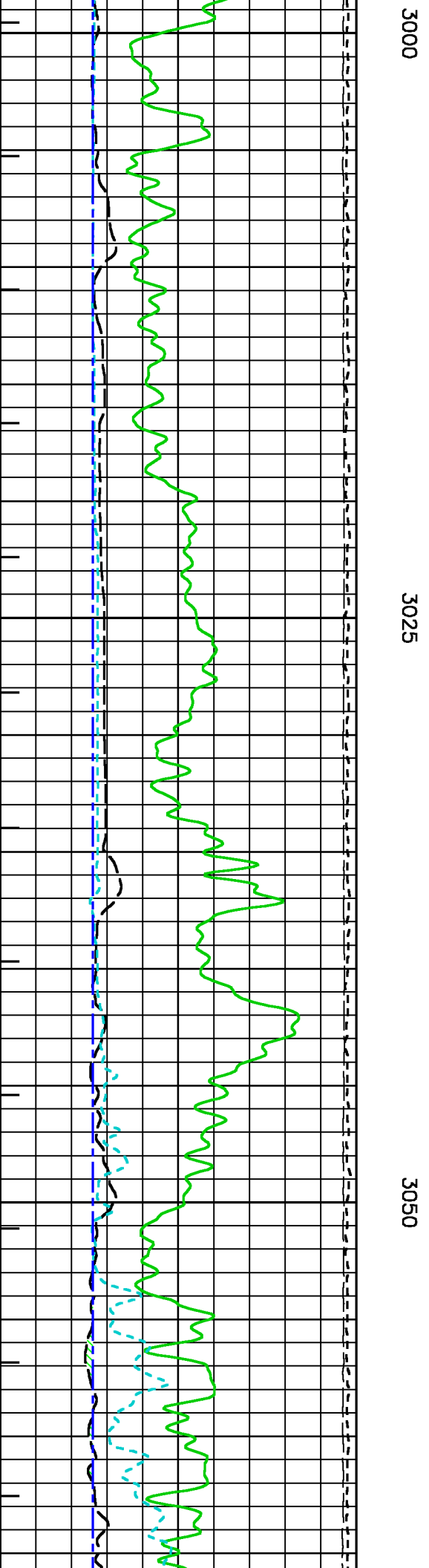
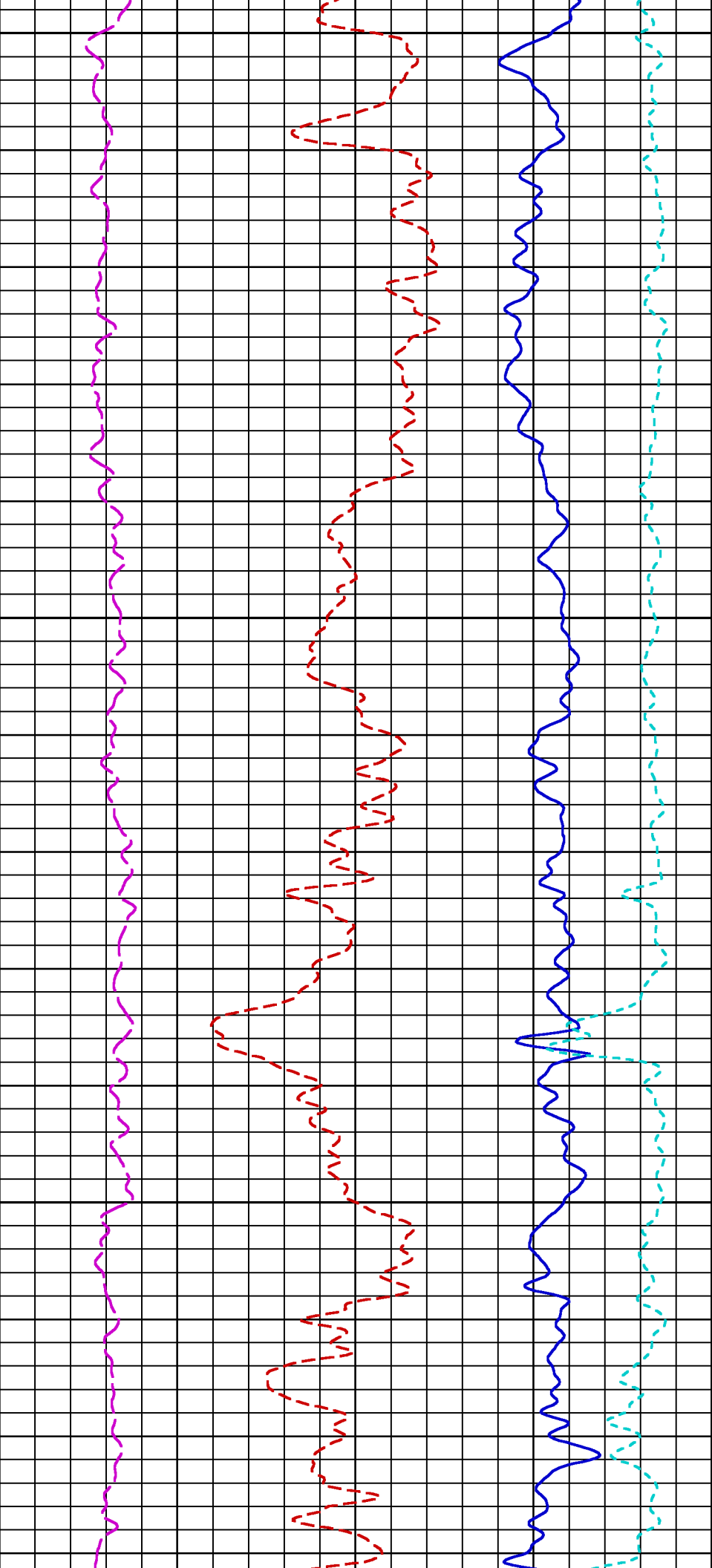


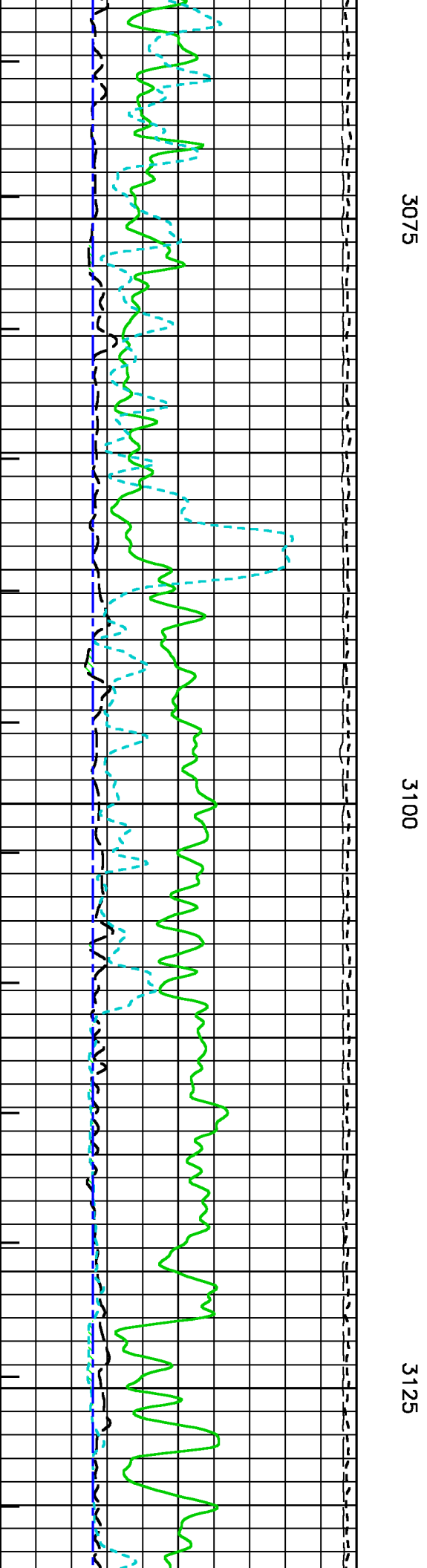
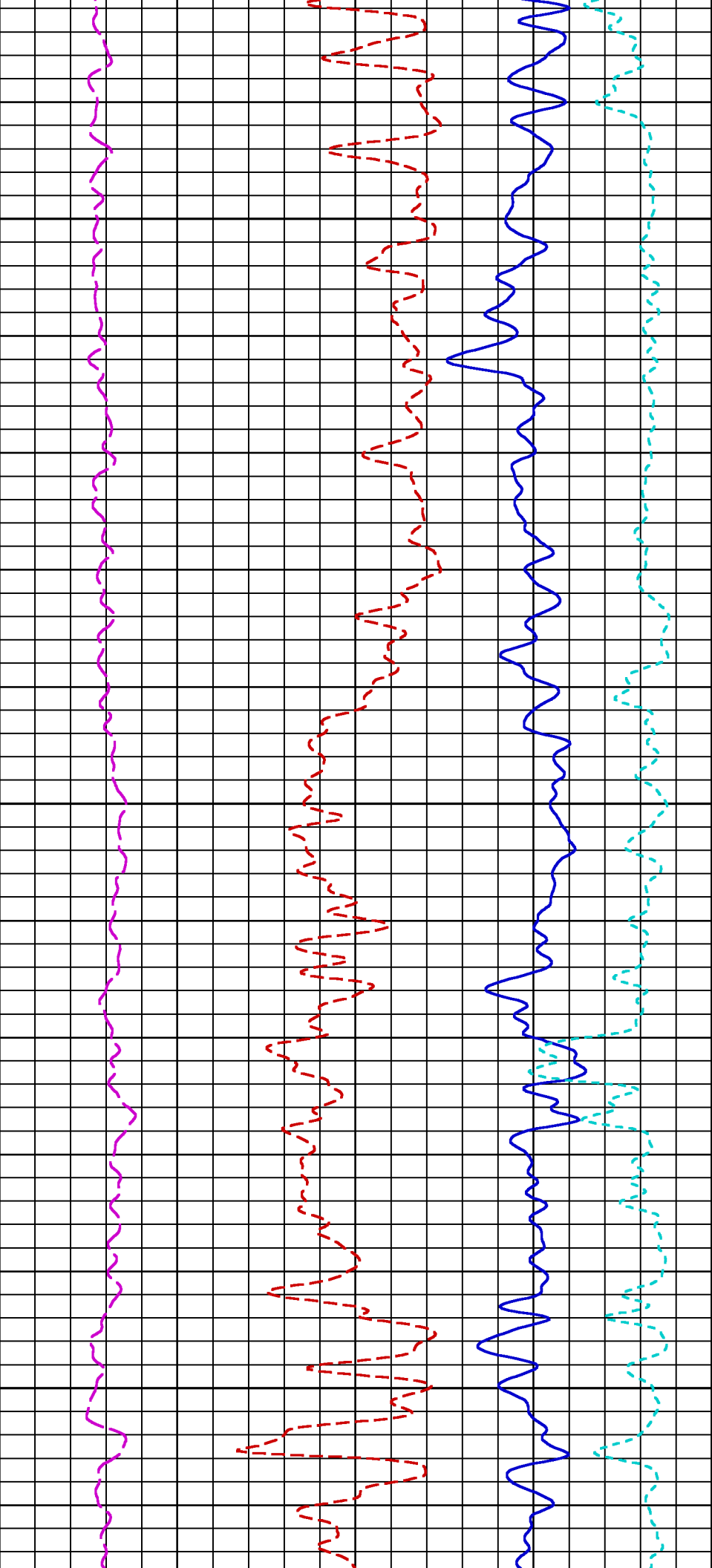


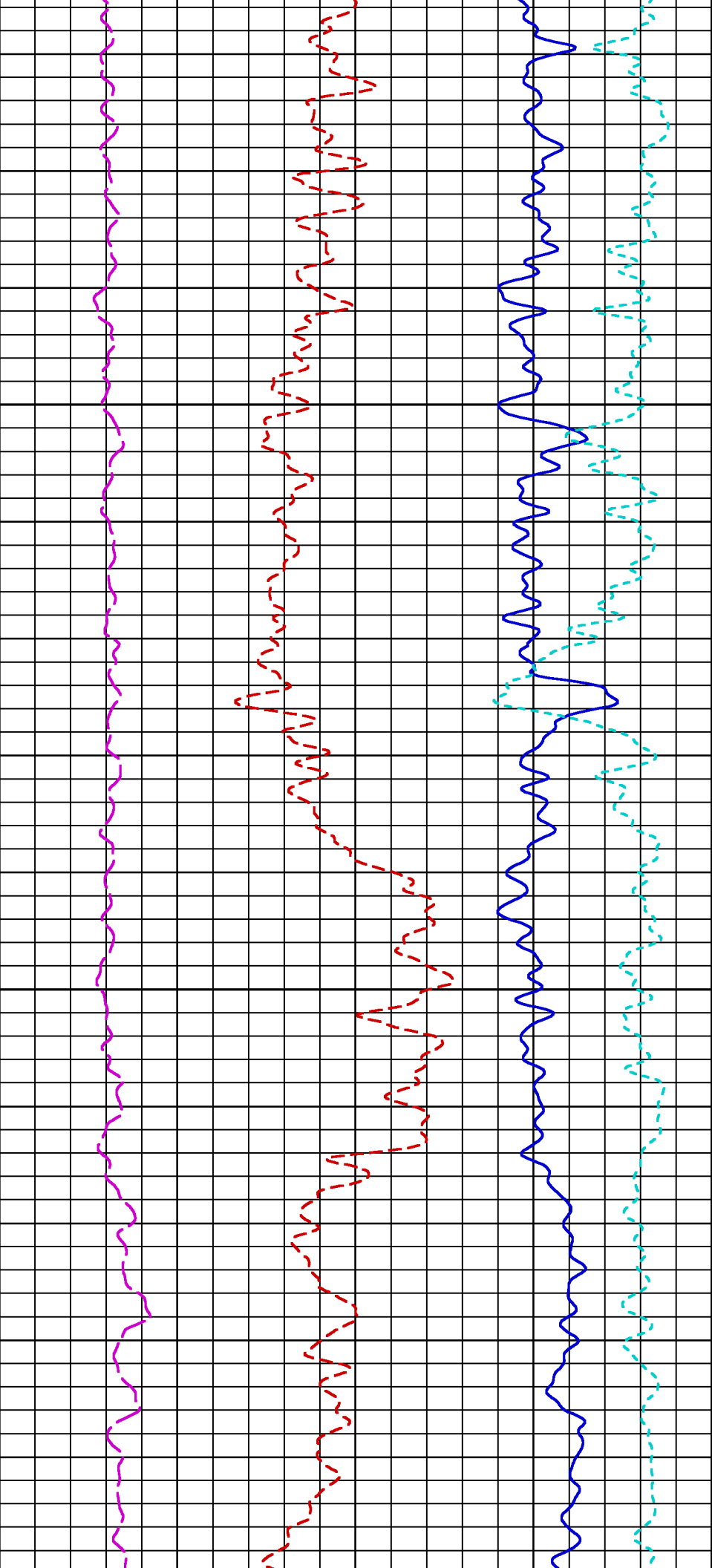
2950

2975





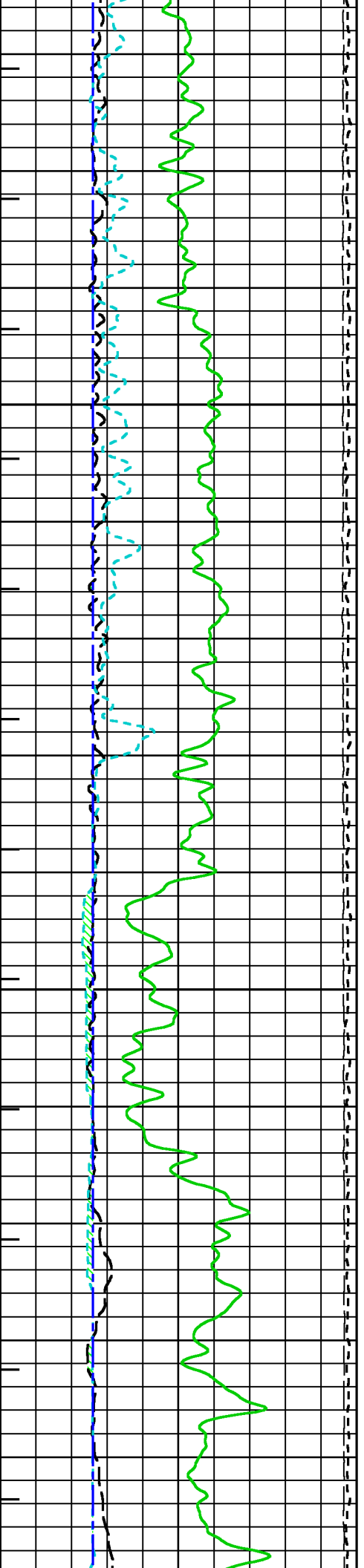


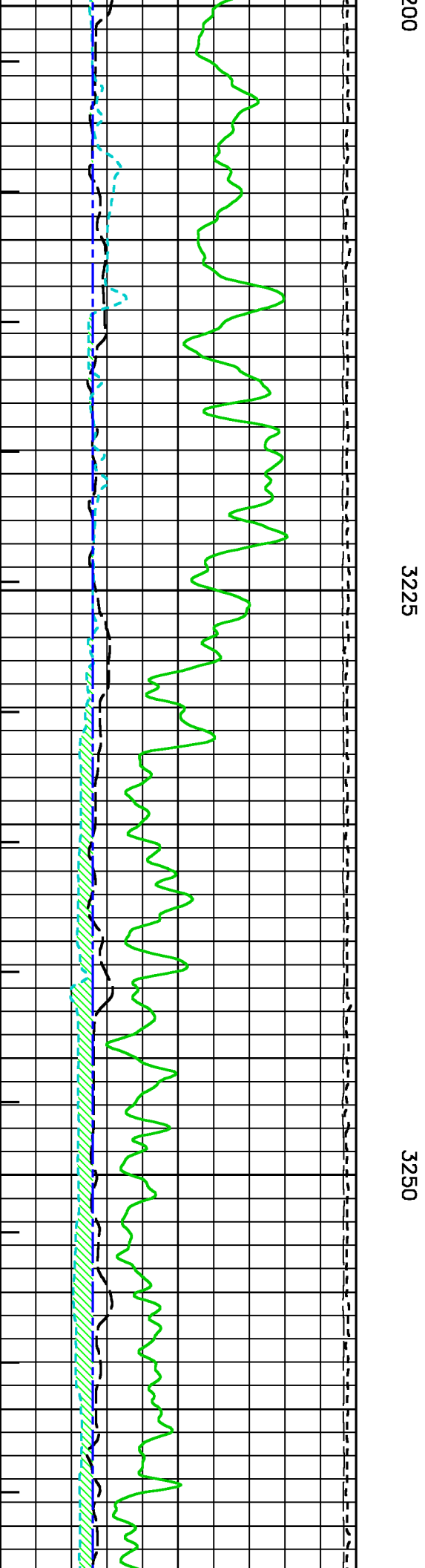
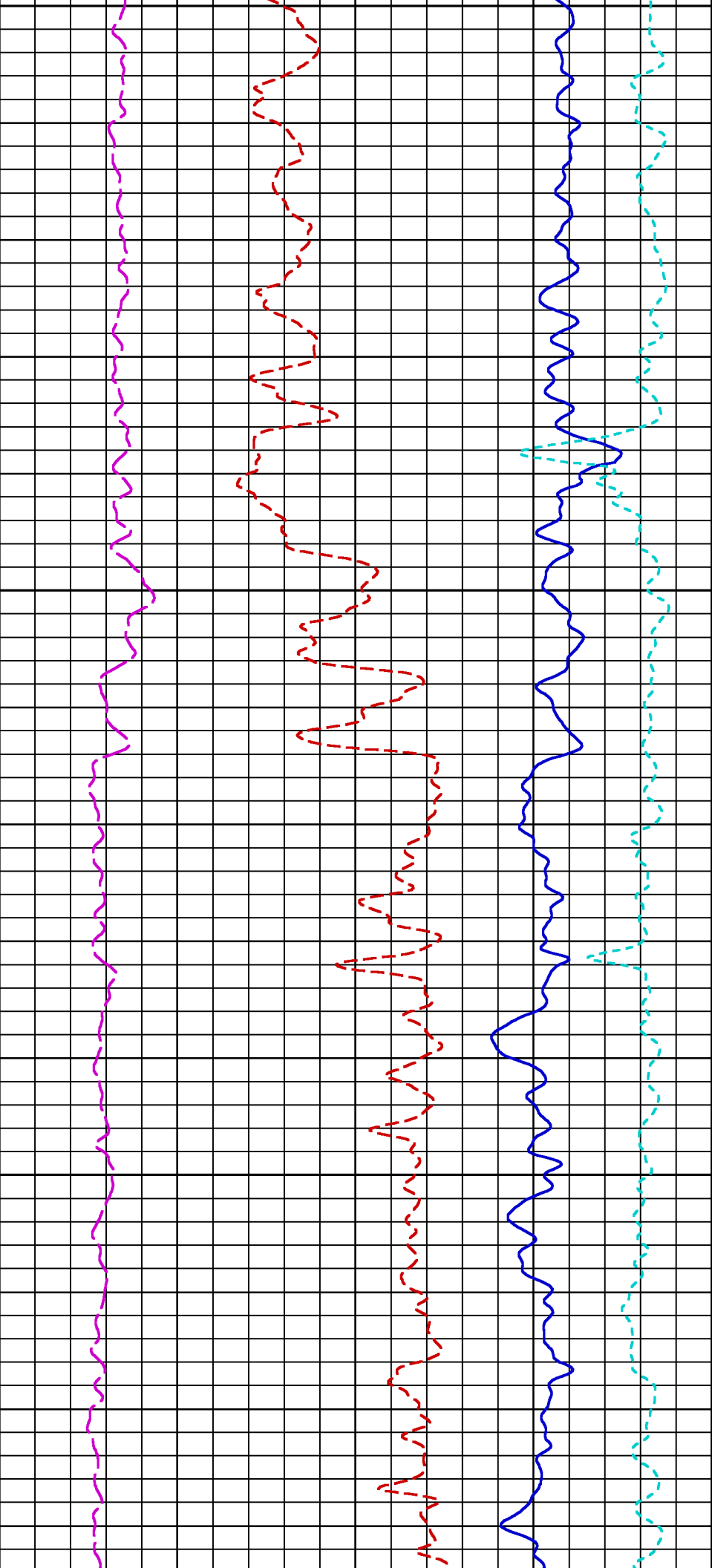


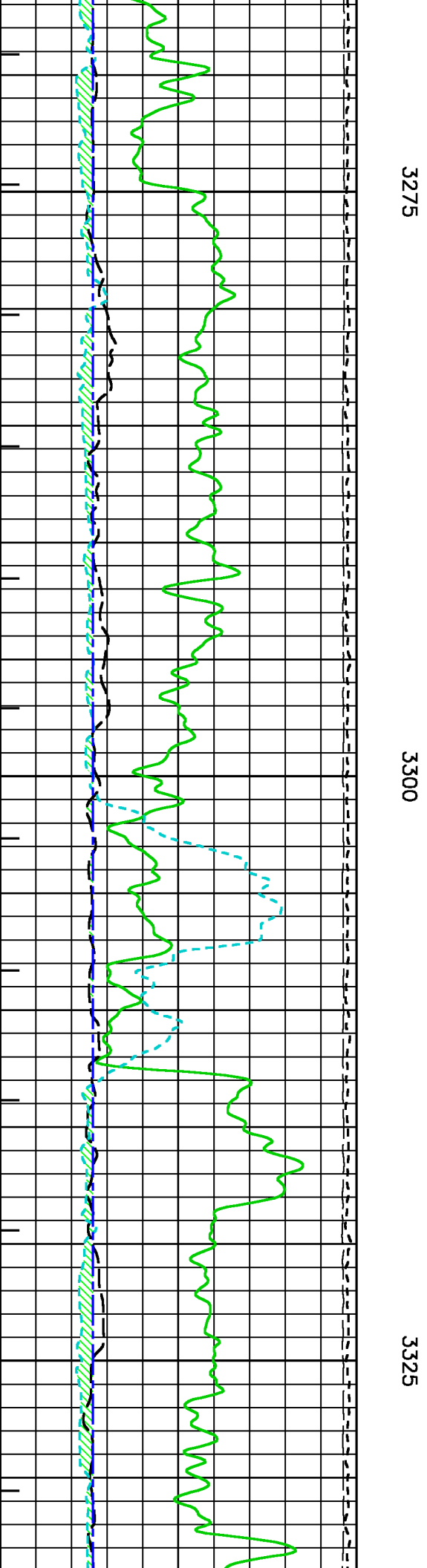
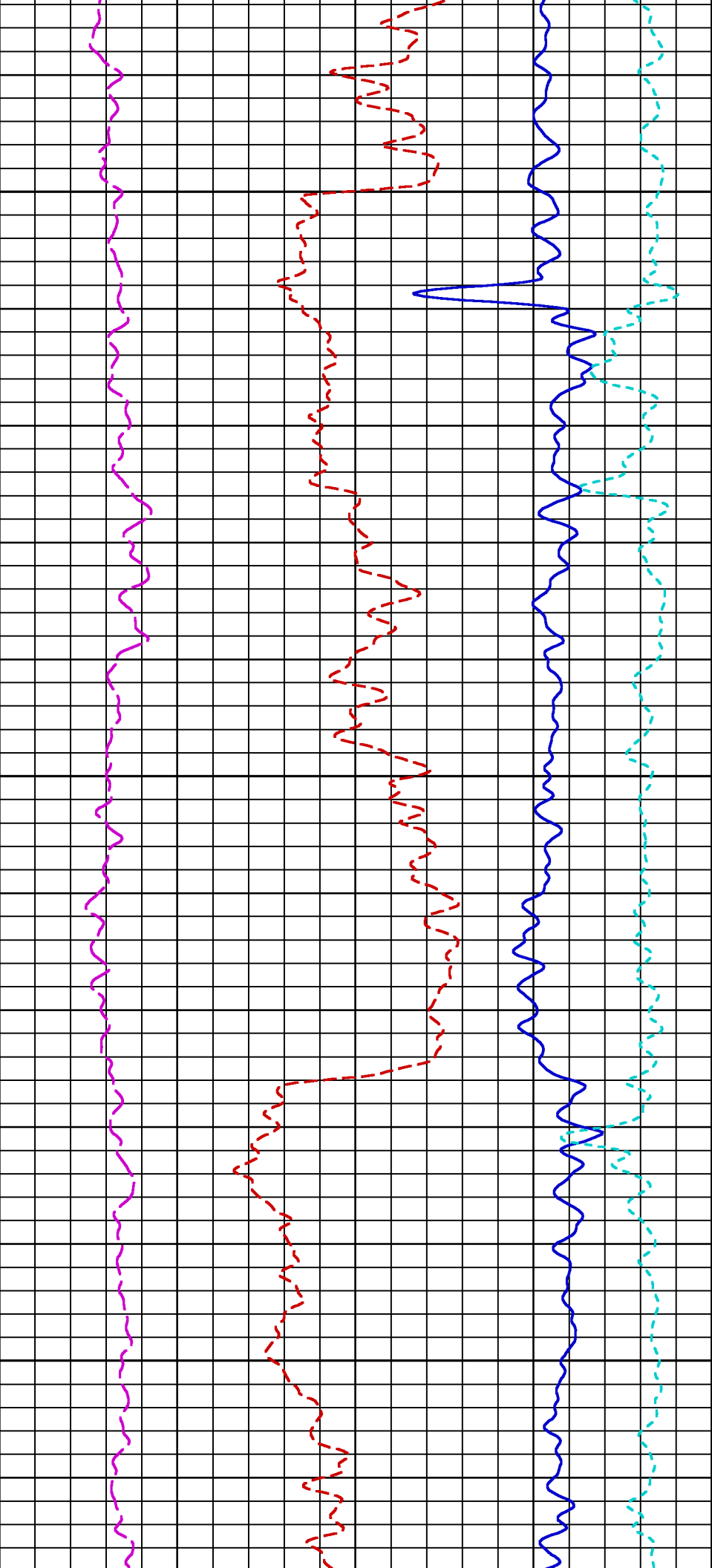
3150

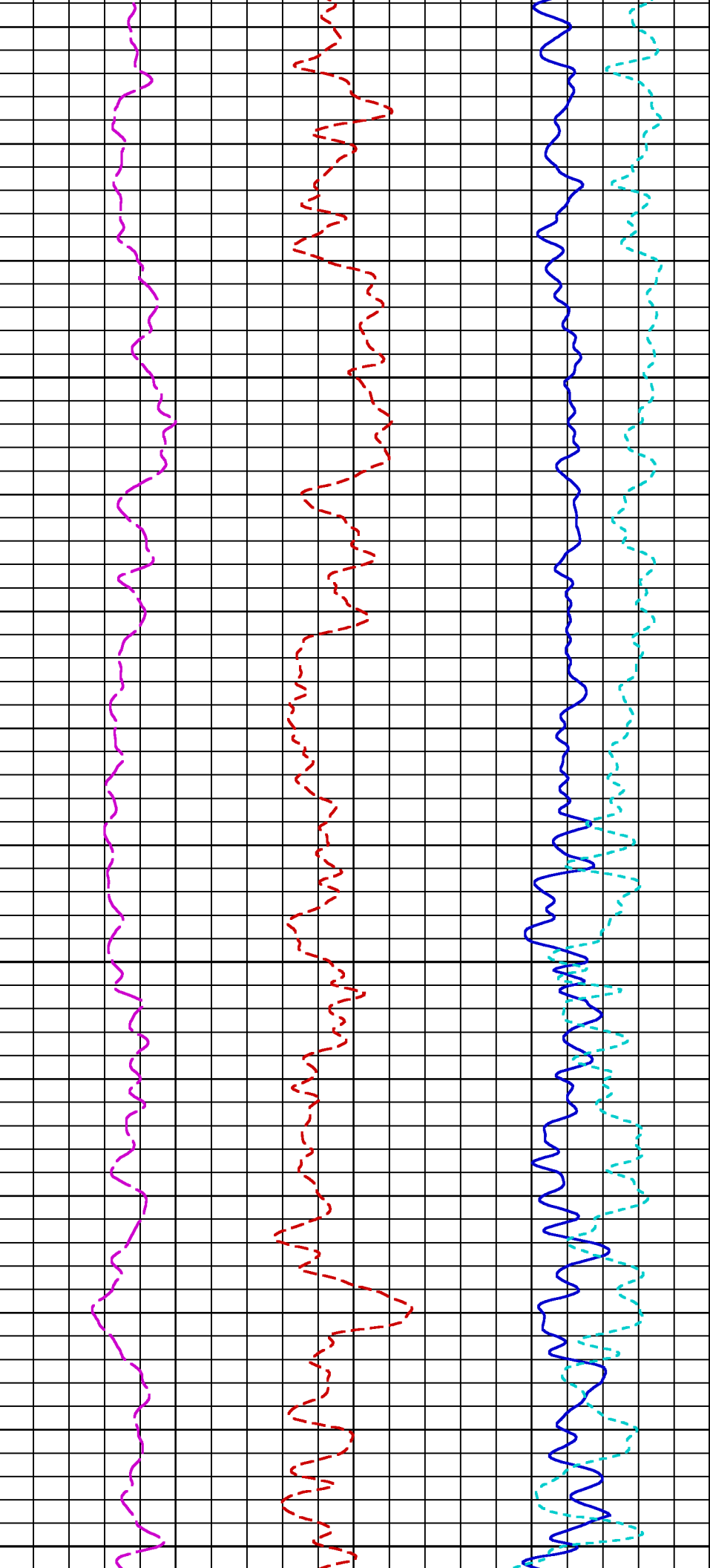
3175

3200





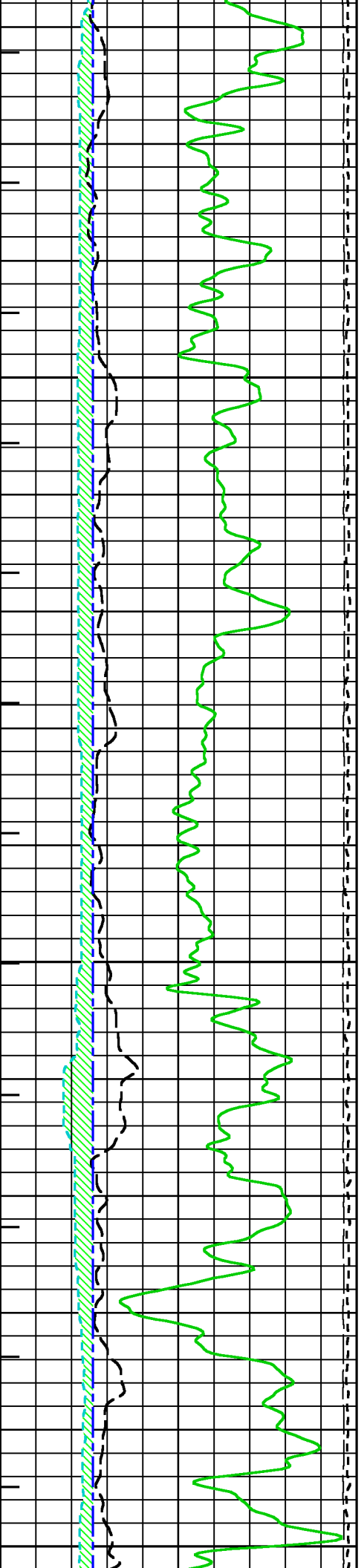


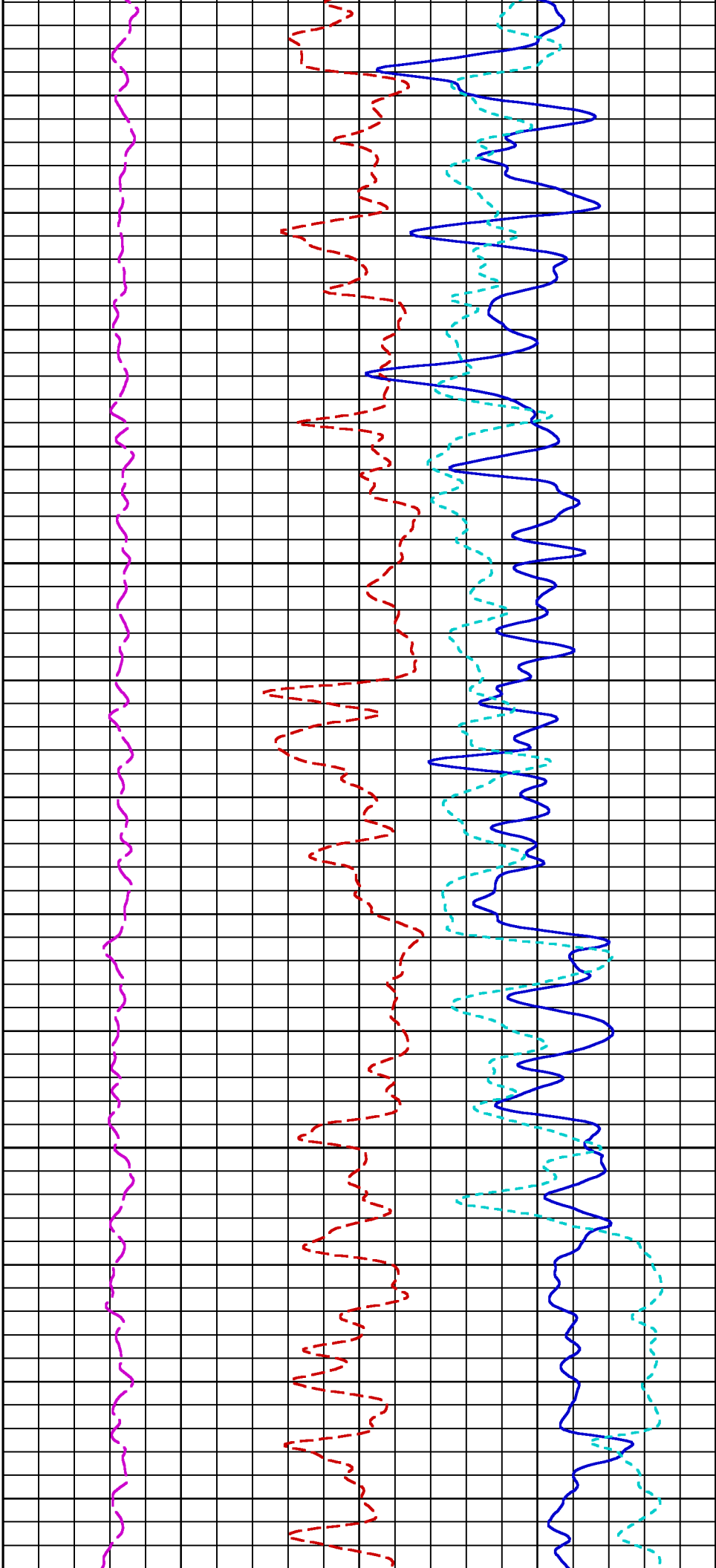


3350

3375

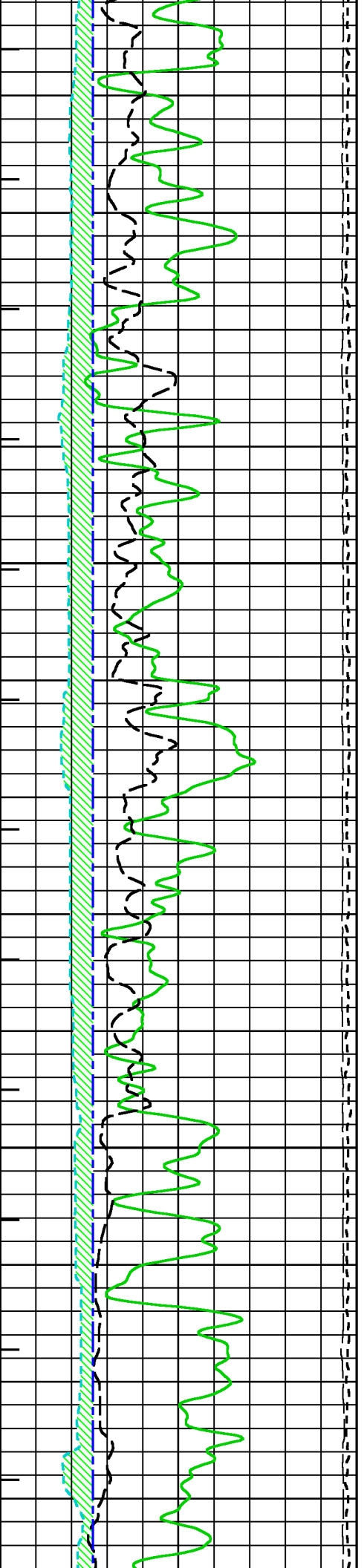
3400

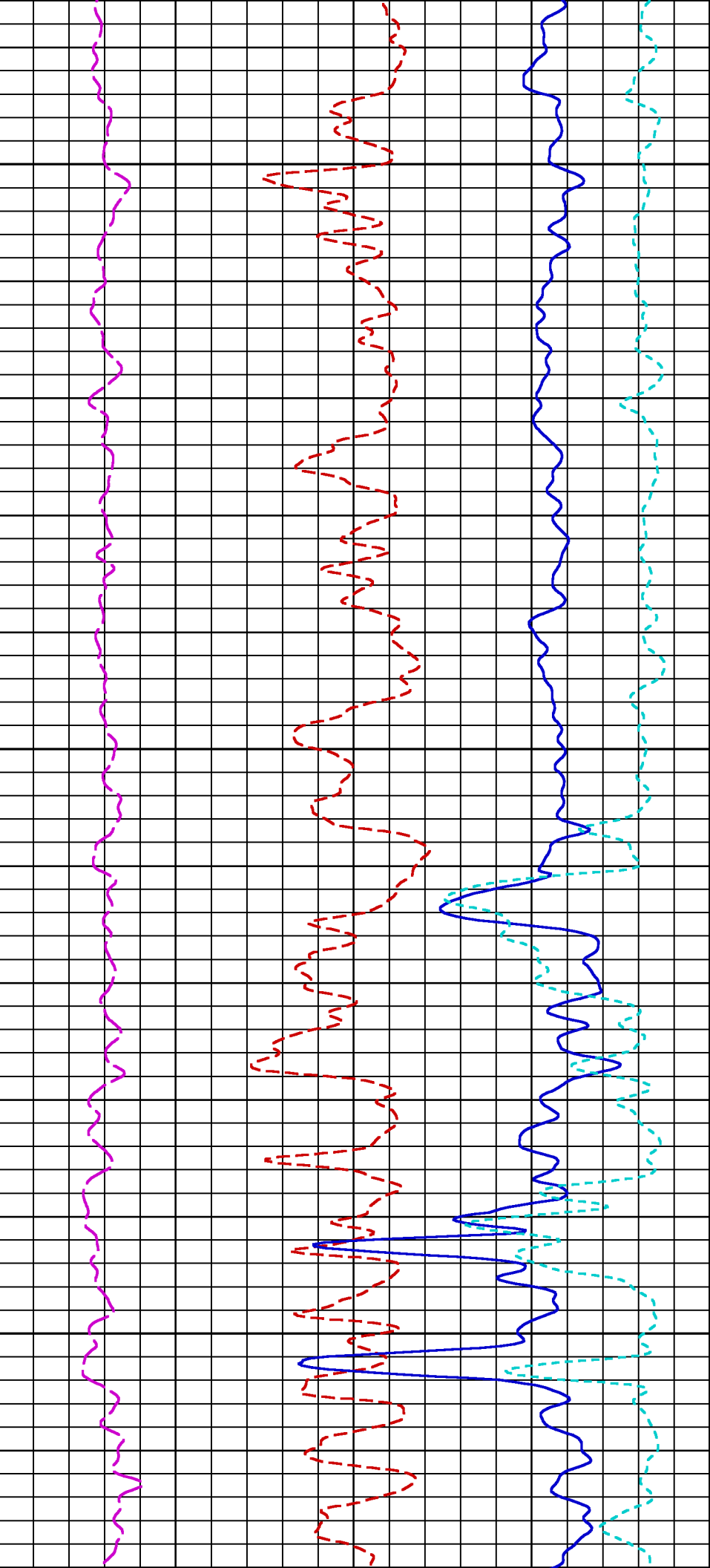




3425

3450

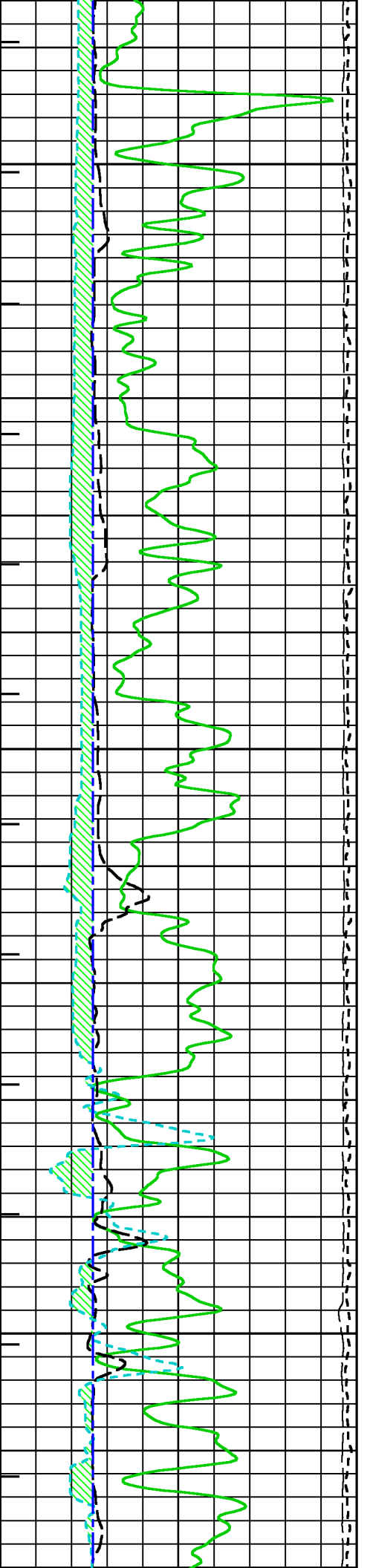


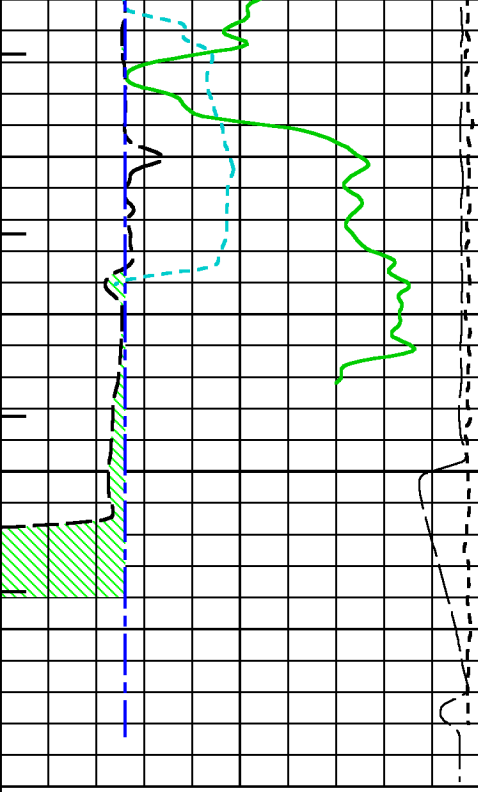


3475

3500

3525





3550

METERS

